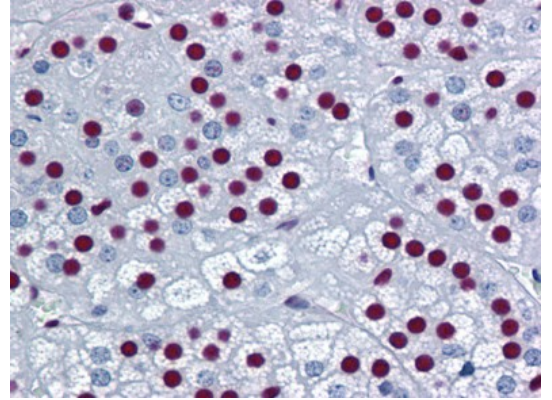


AM20956PU-N**Monoclonal Antibody to Splicing factor 1 (SF1) (1-111)**

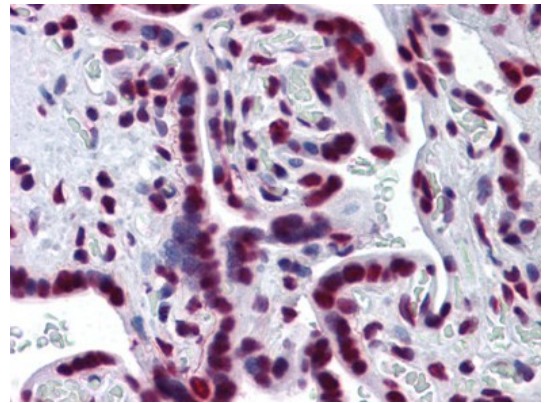
Alternate names:	BBP, Mammalian branch point-binding protein, Transcription factor ZFM1, ZFM1, ZNF162, Zinc finger gene in MEN1 locus, Zinc finger protein 162
Quantity:	50 µg
Concentration:	0.47 mg/ml
Background:	Necessary for the ATP-dependent first step of spliceosome assembly. Binds to the intron branch point sequence (BPS) 5'-UACUAAC-3' of the pre-mRNA. May act as transcription repressor.
Uniprot ID:	Q15637
NCBI:	NP_001171501
GeneID:	7536
Host / Isotype:	Mouse / IgG2a
Clone:	2E12
Immunogen:	Recombinant protein, SF1 (NP_004621, 1 a.a. ~ 111 a.a) partial recombinant protein with GST tag Genename: SF1 Remarks: MW of the GST tag alone is 26 KDa.
Format:	State: Liquid purified Ig fraction Purification: Protein A Chromatography Buffer System: PBS, pH 7.4
Applications:	ELISA. Immunofluorescence: 10 µg/ml. Immunohistochemistry on Paraffin Sections: 5 µg/ml. Western Blot. Other applications not tested. Optimal dilutions are dependent on conditions and should be determined by the user.
Specificity:	This antibody reacts to Splicing Factor 1(SF1) at aa 1-111.
Species Reactivity:	Tested: Human
Storage:	Store the antibody (in aliquots) at -20°C. Avoid repeated freezing and thawing. Shelf life: one year from despatch.

Pictures:

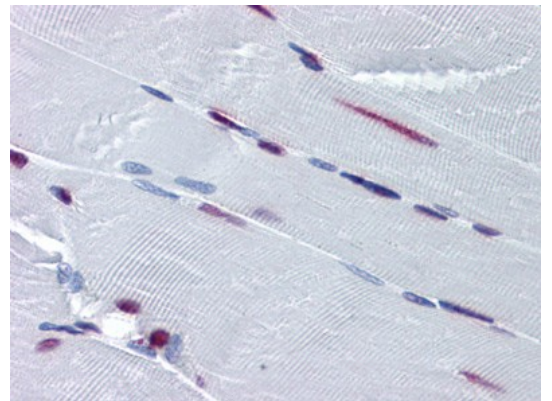
Human Adrenal: Formalin-Fixed, Paraffin-Embedded (FFPE)



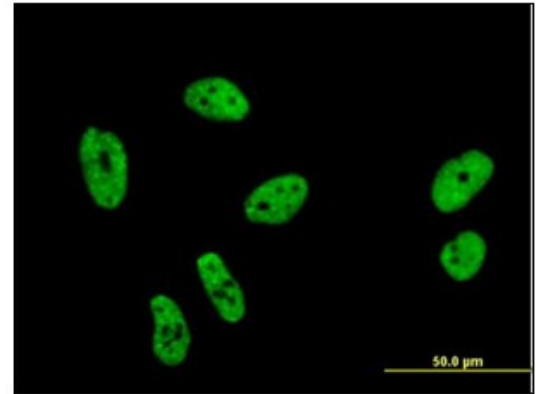
Human Placenta: Formalin-Fixed, Paraffin-Embedded (FFPE)



Human Skeletal Muscle: Formalin-Fixed, Paraffin-Embedded (FFPE)



Immunofluorescence of monoclonal antibody to SF1 on HeLa cell (antibody concentration 10 µg/ml).



Detection limit for recombinant GST tagged SF1 is approximately 0.03 ng/ml as a capture antibody.

