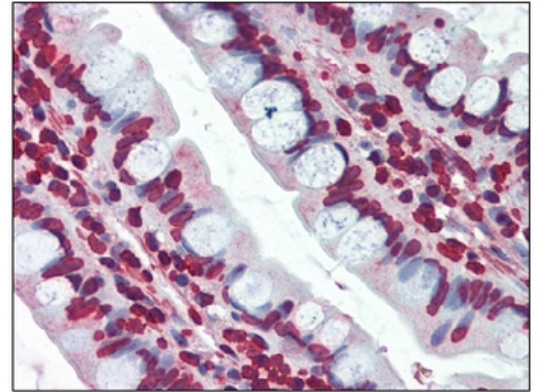


**AM20406SU-N****Monoclonal Antibody to EPHA2 / ECK - Ascites**

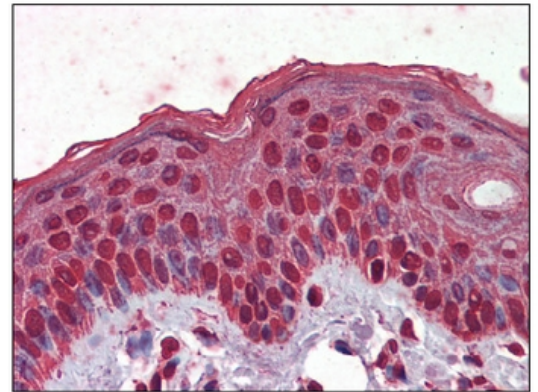
<b>Alternate names:</b>	Eph receptor A2, Ephrin type-A receptor 2, Epithelial cell kinase, Tyrosine-protein kinase receptor ECK
<b>Quantity:</b>	50 µl
<b>Background:</b>	The Eph family of receptors is the largest known subfamily of receptor tyrosine kinases (RTK). Eph RTKs and their ligands, the ephrins, are frequently overexpressed in a variety of cancers and tumor cell lines. One Eph family member, EphA2, is also overexpressed in a wide variety of cancers, including breast, small-cell lung and gastrointestinal cancers, melanomas, and neuroblastomas. The ephrin-Eph interactions are important in development, especially in cell-cell interactions involved in nervous system patterning and possibly in cancer.
<b>Uniprot ID:</b>	<a href="#">P29317</a>
<b>NCBI:</b>	<a href="#">NP_004422</a>
<b>GeneID:</b>	<a href="#">1969</a>
<b>Host / Isotype:</b>	Mouse / IgM
<b>Clone:</b>	1B3C7
<b>Immunogen:</b>	Purified recombinant fragment of EphA2 expressed in E. Coli.
<b>Format:</b>	<b>State:</b> Ascites fluid containing 0.03% Sodium Azide as preservative.
<b>Applications:</b>	<b>ELISA:</b> 1/10000. <b>Immunohistochemistry on Paraffin Sections:</b> 1/200 - 1/400. <b>Western Blot:</b> 1/500 - 1/2000. Other applications not tested. Optimal dilutions are dependent on conditions and should be determined by the user.
<b>Specificity:</b>	Recognizes Ephrin Type A Receptor 2 (EPHA2).
<b>Species Reactivity:</b>	<b>Tested:</b> Human.
<b>Storage:</b>	Store the antibody undiluted at 2-8°C for one month or (in aliquots) at -20°C for longer. Avoid repeated freezing and thawing. Shelf life: one year from despatch.

**Pictures:**

Small intestine, Human: Formalin-Fixed, Paraffin-Embedded (FFPE)



Skin, Human: Formalin-Fixed, Paraffin-Embedded (FFPE)



Western blot analysis using anti-Human EphA2 monoclonal antibody against NIH3T3 cell lysate.

