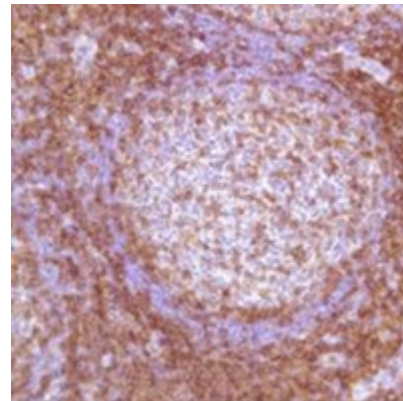


Monoclonal Antibody to CD4 - Purified

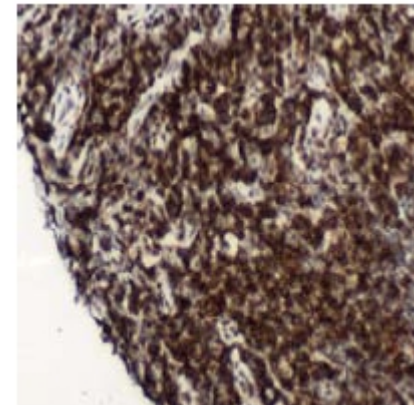
Alternate names:	T-cell surface antigen T4/Leu-3, T-cell surface glycoprotein CD4
Catalog No.:	AM11105PU-N
Quantity:	1 ml
Concentration:	0.025 mg/ml.
Background:	CD4, a single chain transmembrane glycoprotein, is found on a T cell subset (helper/inducer) representing 45% of peripheral blood lymphocytes. CD4 is also present on 80% of thymocytes and at a lower level on monocytes. CD4 is involved in recognition of antigen presented along with MHC class II by APCs. It serves as receptor for HIV.
Uniprot ID:	P01730
NCBI:	9606
GeneID:	920
Host:	Rabbit
Clone:	SP35
Immunogen:	Synthetic peptide corresponding to internal region of Human CD4. Remarks: Epitope: Internal region.
Format:	State: Liquid purified Ig Fraction Purification: Protein A/G Chromatography Buffer System: PBS, pH 7.6 Preservatives: 0.09% Sodium Azide Stabilizers: 1% BSA
Applications:	FACS analysis: 1/100. <i>Positive Control:</i> Jurkat cell line. Immunohistochemistry on Paraffin Sections: 1/50 for 30 min at RT. Staining of formalin-fixed tissues requires boiling tissue sections in EDTA buffer for 10 min followed by cooling at RT for 20 min. <i>Positive Control:</i> Tonsil, T cell lymphoma. Other applications not tested. Optimal dilutions are dependent on conditions and should be determined by the user.
Molecular Weight:	59 kDa
Specificity:	This antibody recognizes CD4. <i>Cellular Localization:</i> Membrane.
Species Reactivity:	Tested: Human. Expected from sequence similarity: Pig.

Storage: Store the antibody undiluted at 2-8°C.
DO NOT FREEZE!
Shelf life: one year from despatch.

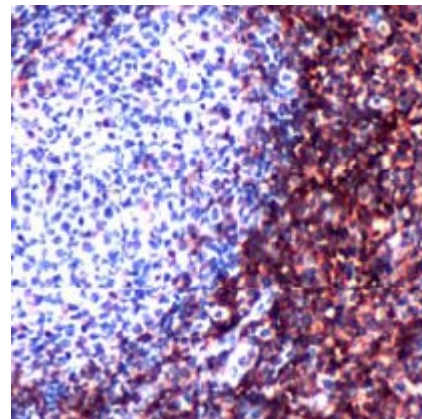
Pictures: Human tonsil stained with Anti-CD4 Antibody Cat.-No AM11105PU (Clone SP35).



Human T cell lymphoma stained with Anti-CD4 Antibody Cat.-No AM11105PU (Clone SP35).



Human tonsil stained with Anti-CD4 Antibody Cat.-No AM11105PU (Clone SP35).



Cytometric analysis of Anti-CD4 Antibody Cat.-No AM11105PU (Clone SP35) in Jurkats (green) compare to negative control of rabbit IgG (blue).

