

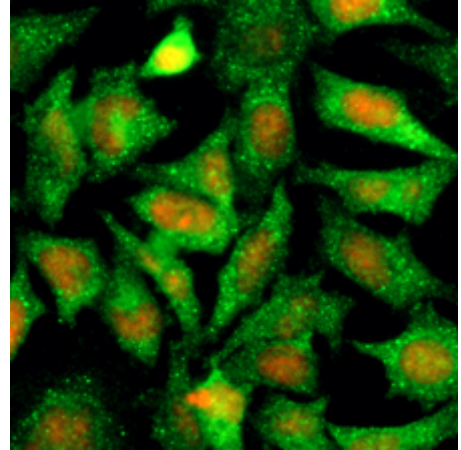
AM09353PU-N**Monoclonal Antibody to SERPINB5 / Maspin - Purified**

Alternate names:	PI-5, PI5, Peptidase inhibitor 5, Protease inhibitor 5, Serpin B5
Quantity:	0.1 ml
Concentration:	1.0 mg/ml
Background:	Serine (or cysteine) proteinase inhibitor clade B (ovalbumin) member 5, also known as Maspin, is a tumor suppressor protein of serine proteinase inhibitor family. It plays an essential role in embryonic development through critical roles in cell adhesion. Also, it is present in normal breast and prostatic epithelial cells but downregulated in the respective carcinomas.
Uniprot ID:	P36952
NCBI:	NP_002630
GeneID:	5268
Host / Isotype:	Mouse / IgG2b
Recommended Isotype Controls:	SM12P, AM03110PU-N
Clone:	AT2N6
Immunogen:	Recombinant Maspin (1-375 aa) purified from E. coli
Format:	State: Liquid purified Ig fraction Purification: Protein-G affinity chromatography Buffer System: PBS, pH 7.4 containing 0.02% Sodium Azide and 10% Glycerol
Applications:	ELISA. Immunofluorescence. Western blot (1:1,000 - 1:2,000). Other applications not tested. Optimal dilutions are dependent on conditions and should be determined by the user.
Specificity:	The antibody recognizes human Serpin B5 (Maspin). Other species not tested. Species: Human Other species not tested.
Storage:	Store undiluted at 2-8°C for up to two weeks or (in aliquots) at -20°C for longer. Avoid repeated freezing and thawing. Shelf life: one year from despatch.
General Readings:	Lockett J. et al., (2006) J Cell Biochem 97(4):651- Khalkhali Ellis Z. et al., (2006) Clin Cancer Res 12(24):7279-7283.

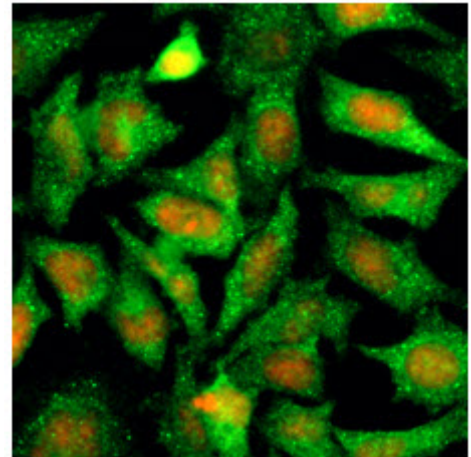
Pictures:

Immunofluorescence analysis:

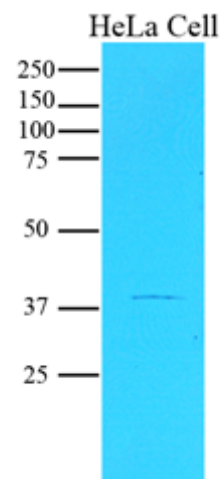
Immunofluorescence of human HeLa cells stained with PI (Red) and monoclonal anti-Maspin antibody (1:500) with Alexa 488 (Green).



Immunofluorescence of human HeLa cells stained with PI (Red) and monoclonal anti-Maspin antibody (1:500) with Alexa 488 (Green).



Western blot analysis: Cell lysates of HeLa (20 µg) were resolved by SDS-PAGE, transferred to NC membrane and probed with anti-human Maspin (1:1000). Proteins were visualized using a goat anti-mouse secondary antibody conjugated to HRP and an ECL detection system.



Cell lysates of HeLa(20ug) were resolved by SDS-PAGE, transferred to NC membrane and probed with anti-human Maspin (1:1000). Proteins were visualized using a goat anti-mouse secondary antibody conjugated to HRP and an ECL detection system.

