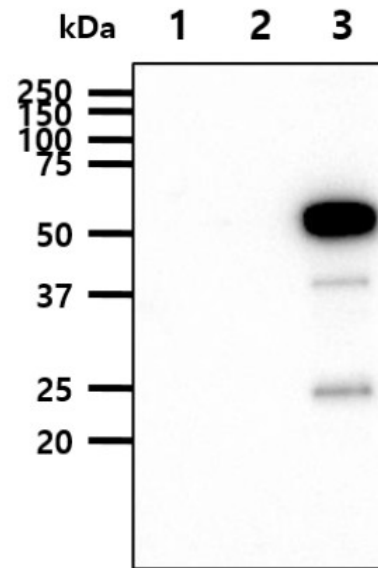


AM09008PU-N**Monoclonal Antibody to EPHA2 / ECK - Purified**

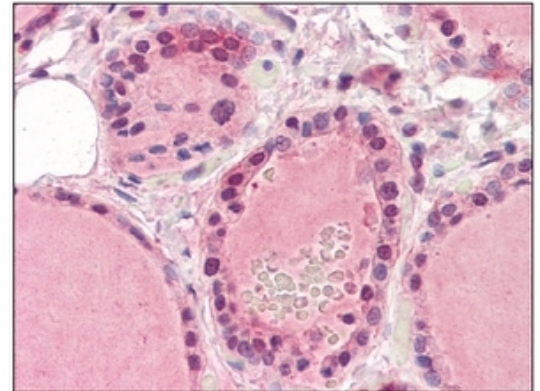
Alternate names:	Eph receptor A2, Ephrin type-A receptor 2, Epithelial cell kinase, Tyrosine-protein kinase receptor ECK
Quantity:	0.1 ml
Concentration:	1.0 mg/ml
Background:	The Eph family of receptors is the largest known subfamily of receptor tyrosine kinases (RTK). Eph RTKs and their ligands, the ephrins, are frequently overexpressed in a variety of cancers and tumor cell lines. One Eph family member, EphA2, is also overexpressed in a wide variety of cancers, including breast, small-cell lung and gastrointestinal cancers, melanomas, and neuroblastomas. The ephrin-Eph interactions are important in development, especially in cell-cell interactions involved in nervous system patterning and possibly in cancer.
Uniprot ID:	P29317
NCBI:	NP_004422
GeneID:	1969
Host / Isotype:	Mouse / IgG2b
Recommended Isotype Controls:	SM12P, AM03110PU-N
Clone:	3D7
Immunogen:	Recombinant human EphA2 (559-976 aa) purified from E. coli
Format:	State: Liquid purified Ig fraction Purification: Affinity Chromatography on Protein G Buffer System: PBS, pH 7.4 containing 0.02% Sodium Azide and 10% Glycerol
Applications:	ELISA. Western blot (1/500-1/2,000). Immunohistochemistry (1/100-1/200). Other applications not tested. Optimal dilutions are dependent on conditions and should be determined by the user.
Specificity:	The antibody recognizes Human and Mouse EPHA2. Other species not tested.
Storage:	Store undiluted at 2-8°C for up to two weeks or (in aliquots) at -20°C for longer. Avoid repeated freezing and thawing. Shelf life: one year from despatch.
General Readings:	1. Ireton RC, Chen J. EphA2 receptor tyrosine kinase as a promising target for cancer therapeutics. <i>Curr Cancer Drug Targets</i> . 2005 May;5(3):149-57. PubMed PMID: 15892616. 2. Nakamoto M, Bergemann AD. Diverse roles for the Eph family of receptor tyrosine kinases in carcinogenesis. <i>Microsc Res Tech</i> . 2002 Oct 1;59(1):58-67. PubMed PMID: 12242697.

Pictures:

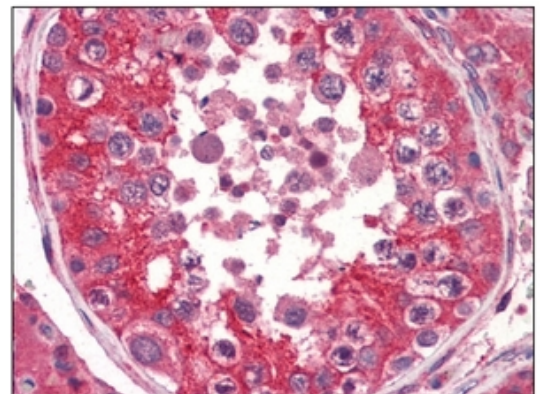
Western Blot analysis: The cell lysates (10ug) were resolved by SDS-PAGE, transferred to PVDF membrane and probed with anti-human EphA2 antibody (1/1000). Proteins were visualized using a goat anti-mouse secondary antibody conjugated to HRP and an ECL detection system. Lane 1: 293T cell lysate Lane 2: EphA2 extracellular domain transfected 293T cell lysate. Lane 3: EphA2 cytoplasmic domain transfected 293T cell lysate.



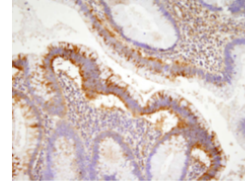
Immunohistochemistry: Formalin-Fixed, Paraffin-Embedded Human Thyroid stained with EPHA2 antibody at 5 µg/ml followed by biotinylated anti-mouse IgG secondary antibody alkaline phosphatase-streptavidin and chromogen.



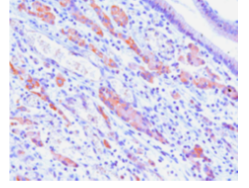
Immunohistochemistry: Formalin-Fixed, Paraffin-Embedded Human Testis stained with EPHA2 antibody at 5 µg/ml followed by biotinylated anti-mouse IgG secondary antibody alkaline phosphatase-streptavidin and chromogen.



Immunohistochemistry: Paraffin embedded sections of human colon and gastric cancer tissue were incubated with anti-human EphA2 antibody (1/100) for 2 hours at room temperature. Antigen retrieval was performed in 0.1 M sodium citrate buffer and detected using Diaminobenzidine (DAB).



Human colon cancer



Human gastric cancer