

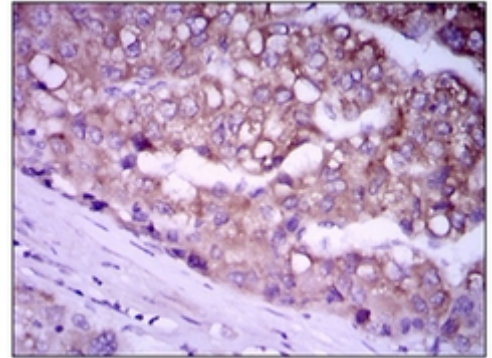
**AM06776PU-N****Monoclonal Antibody to Glypican-3 / GPC3 - Purified**

<b>Alternate names:</b>	GTR2-2, Intestinal protein OCI-5, MXR7, OCI5
<b>Quantity:</b>	0.1 mg
<b>Concentration:</b>	1.0 mg/ml
<b>Background:</b>	Cell surface heparan sulfate proteoglycans are composed of a membrane-associated protein core substituted with a variable number of heparan sulfate chains. Members of the glypican-related integral membrane proteoglycan family (GRIPS) contain a core protein anchored to the cytoplasmic membrane via a glycosyl phosphatidylinositol linkage. These proteins may play a role in the control of cell division and growth regulation. The protein encoded by this gene can bind to and inhibit the dipeptidyl peptidase activity of CD26, and it can induce apoptosis in certain cell types. Deletion mutations in this gene are associated with Simpson-Golabi-Behmel syndrome, also known as Simpson dysmorphia syndrome. Alternative splicing results in multiple transcript variants.
<b>Uniprot ID:</b>	<a href="#">P51654</a>
<b>NCBI:</b>	<a href="#">NP_004475.1</a>
<b>GeneID:</b>	<a href="#">2719</a>
<b>Host / Isotype:</b>	Mouse / IgG1
<b>Recommended Isotype Controls:</b>	SM10P (for use in human samples), AM03095PU-N
<b>Clone:</b>	9C2
<b>Immunogen:</b>	Purified recombinant fragment of Human GPC3 expressed in E. Coli.
<b>Format:</b>	<b>State:</b> Liquid purified IgG fraction <b>Buffer System:</b> PBS <b>Preservatives:</b> 0.05% Sodium Azide <b>Stabilizers:</b> 0.5% protein
<b>Applications:</b>	<b>ELISA:</b> 1/10000. <b>Western Blot:</b> 1/500 - 1/2000. <b>Flow Cytometry:</b> 1/200 - 1/400. <b>Immunofluorescence:</b> 1/200 - 1/1000. <b>Immunohistochemistry on Paraffin Sections:</b> 1/200 - 1/1000. Other applications not tested. Optimal dilutions are dependent on conditions and should be determined by the user.
<b>Molecular Weight:</b>	65.5 kDa
<b>Specificity:</b>	Recognizes Glypican-3 / GPC3.
<b>Species Reactivity:</b>	<b>Tested:</b> Human, Mouse.

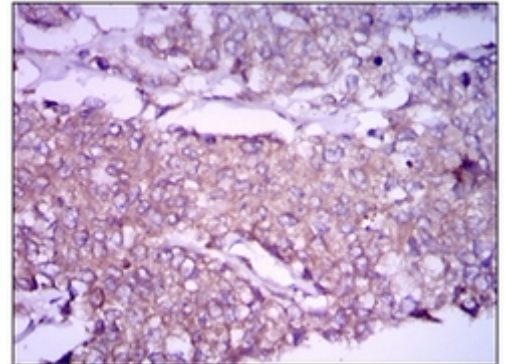
**Storage:** Store the antibody undiluted at 2-8°C for one month or (in aliquots) at -20°C for longer.  
Avoid repeated freezing and thawing.  
Shelf life: one year from despatch.

**General Readings:** 1. Int J Cancer. 2010 Mar 15;126(6):1291-301.  
2. Cancer Biol Ther. 2009 Dec;8(24):2329-38.

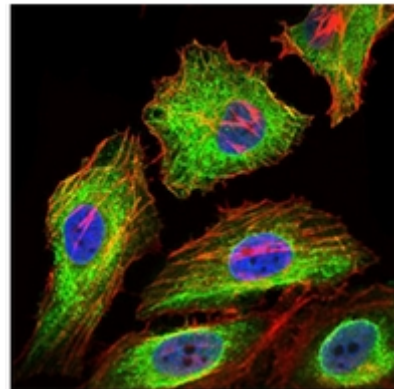
**Pictures:** Immunohistochemical analysis of paraffin-embedded liver cancer tissues using GPC3 antibody Cat.-No AM06776PU-N with DAB staining.



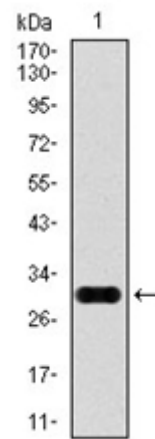
Immunohistochemical analysis of paraffin-embedded breast cancer tissues using GPC3 antibody Cat.-No AM06776PU-N with DAB staining.



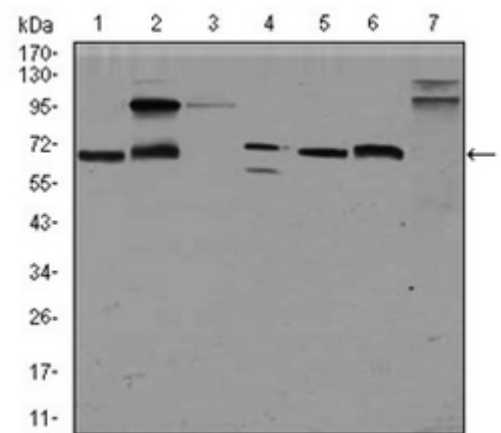
Immunofluorescence analysis of HeLa cells using GPC3 antibody Cat.-No AM06776PU-N (green). Blue: DRAQ5 fluorescent DNA dye. Red: Actin filaments have been labeled with Alexa Fluor-555 phalloidin.



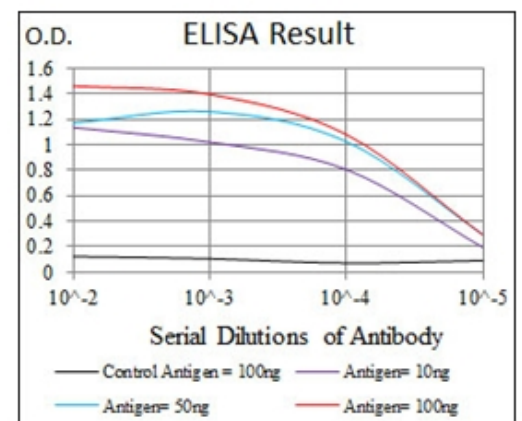
Western blot analysis using GPC3 Lane against Human GPC3 (AA: 55-200) recombinant protein. (Expected MW is 28.5 kDa)



Western blot analysis using GPC3 antibody Cat.-No AM06776PU-N against HepG2 (Lane 1), HEK293 (Lane 2), Jurkat (Lane 3), SK-N-SH (Lane 4), PC-12 (Lane 5), F9 (Lane 6) and Mouse liver (Lane 7) cell lysate.



Red: Control Antigen (100ng) Purple: Antigen (10ng) Green: Antigen (50ng) Blue: Antigen (100ng)



Flow cytometric analysis of Jurkat cells using GPC3 antibody Cat.-No AM06776PU-N (green) and negative control (red).

