

AM06711SU-N

Monoclonal Antibody to TUBA8 / TUBAL2 - Ascites

Alternate names:

Alpha-tubulin 8, Tubulin alpha chain-like 2, Tubulin alpha-8 chain

Quantity:

0.1 ml

Background:

This gene encodes a member of the alpha tubulin protein family. Alpha tubulins are one of two core protein families (alpha and beta tubulins) that heterodimerize and assemble to form microtubules. Mutations in this gene are associated with polymicrogyria and optic nerve hypoplasia. Alternate splicing results in multiple transcript variants.

Uniprot ID:

[Q9NY65](#)

NCBI:

[NP_001180343.1](#)

GenelD:

[1962](#)

Host / Isotype:

Mouse / IgG2b

Clone:

2D6

Immunogen:

Purified recombinant fragment of Human TUBA8 expressed in E. Coli.

Format:

State: Ascitic fluid containing 0.03% Sodium Azide.

Applications:

ELISA: 1/10000.

Western Blot: 1/500 - 1/2000.

Flow Cytometry: 1/200 - 1/400.

Immunofluorescence: 1/200 - 1/1000.

Immunohistochemistry on Paraffin Sections: 1/200 - 1/1000.

Other applications not tested. Optimal dilutions are dependent on conditions and should be determined by the user.

Molecular Weight:

50 kDa

Specificity:

This antibody recognizes TUBA8 / TUBAL2

Species Reactivity:

Tested: Human and Rat.

Storage:

Store the antibody undiluted at 2-8°C for one month or (in aliquots) at -20°C for longer.

Avoid repeated freezing and thawing.

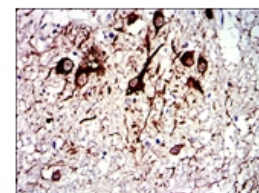
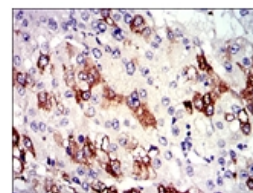
Shelf life: one year from despatch.

General Readings:

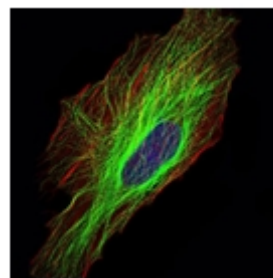
1. Am J Hum Genet. 2009 Nov;85(5):737-44.
2. Am J Hum Genet. 2009 Nov;85(5):628-42.

Pictures:

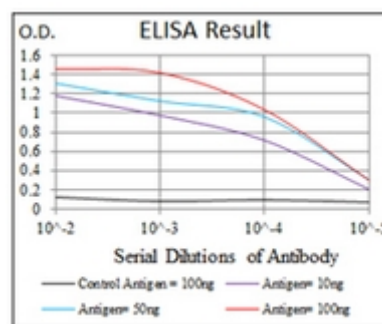
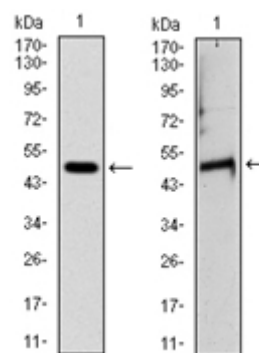
Immunohistochemical analysis of paraffin-embedded liver cancer tissues (left) and medulla oblongata tissues (right) using TUBA8 antibody Cat.-No AM06711SU-N with DAB staining.



Immunofluorescence analysis of Hela cells using TUBA8 antibody Cat.-No AM06711SU-N (green). Blue: DRAQ5 fluorescent DNA dye. Red: Actin filaments have been labeled with Alexa Fluor-555 phalloidin.



Western blot analysis using TUBA8 antibody Cat.-No AM06711SU-N against Human TUBA8 (AA: 294-449) recombinant protein (left) and Rat heart (right) tissue lysate. Expected MW is 50 kDa



Flow Cytometric analysis of NIH/3T3 cells using TUBA8 antibody Cat.-No AM06711SU-N (green) and negative control (red).

