

**AM06574SU-N****Monoclonal Antibody to ACTA2 / aortic smooth muscle Actin - Ascites****Alternate names:**

ACTSA, ACTVS, Alpha-actin-2, Cell growth-inhibiting gene 46 protein

**Quantity:**

0.1 ml

**Background:**

The protein encoded by this gene belongs to the actin family of proteins, which are highly conserved proteins that play a role in cell motility, structure and integrity. Alpha, beta and gamma actin isoforms have been identified, with alpha actins being a major constituent of the contractile apparatus, while beta and gamma actins are involved in the regulation of cell motility. This actin is an alpha actin that is found in skeletal muscle. Defects in this gene cause aortic aneurysm familial thoracic type 6. Multiple alternatively spliced variants, encoding the same protein, have been identified.

**Uniprot ID:**[P62736](#)**NCBI:**[NP\\_001135417.1](#)**GeneID:**[59](#)**Host / Isotype:**

Mouse / IgG1

**Clone:**

1H8

**Immunogen:**

Purified recombinant fragment of Human ACTA2 expressed in E. Coli.

**Format:****State:** Ascitic fluid**Preservatives:** 0.03% Sodium Azide**Applications:****ELISA:** 1/10000.**Western Blot:** 1/500-1/2000.**Flow Cytometry:** 1/200-1/400.**Immunofluorescence:** 1/200-1/1000.

Other applications not tested. Optimal dilutions are dependent on conditions and should be determined by the user.

**Molecular Weight:**

42 kDa

**Specificity:**

This antibody recognizes Human, Monkey, Rat, Mouse ACTA2.

Other species not tested.

**Storage:**

Store the antibody undiluted at 2-8°C for one month or (in aliquots) at -20°C for longer.

Avoid repeated freezing and thawing.

Shelf life: one year from despatch.

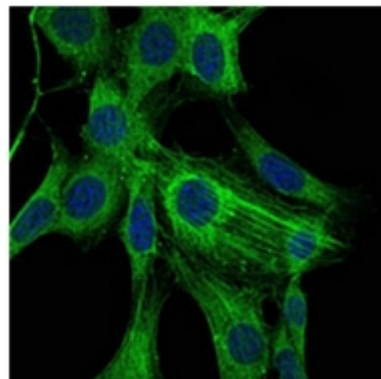
**General Readings:**

1. Nat Genet. 2007 Dec;39(12):1488-93.

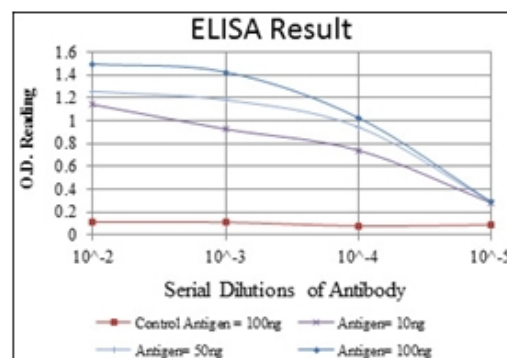
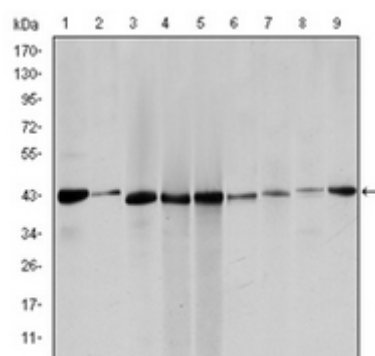
2. Virchows Arch. 2007 Dec;451(6):999-1007.

**Pictures:**

Immunofluorescence analysis of NIH/3T3 cells using ACTA2 antibody Cat.-No AM06574SU-N (green). Blue: DRAQ5 fluorescent DNA dye.



Western blot analysis using ACTA2 antibody Cat.-No AM06574SU-N against HeLa (1), Jurkta (2), HepG2 (3), MCF-7 (4), A431 (5), A549 (6), PC-12 (7), NIH/3T3 (8) and Cos7 (9) cell lysate.



Flow Cytometric analysis of Hela cells  
using ACTA2 antibody Cat.-No  
AM06574SU-N (green) and negative  
control (purple).

