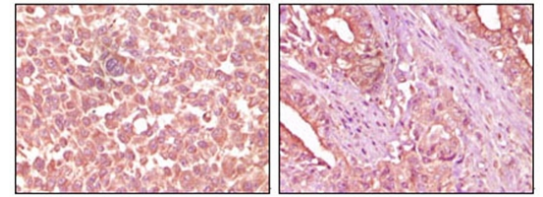


AM06122SU-N**Monoclonal Antibody to EPHA2 / ECK - Ascites**

Alternate names:	Eph receptor A2, Ephrin type-A receptor 2, Epithelial cell kinase, Tyrosine-protein kinase receptor ECK
Quantity:	0.1 ml
Background:	EPH receptor A2 (EphA2), with 976-amino acid protein (about 107 kDa), belongs to the ephrin receptor subfamily of the protein-tyrosine kinase family. EphA1, EphA2, EphA3, EphA4, EphA5, EphA6, EphA7, EphA8, EphA10, EphB1, EphB2, EphB3, EphB4 and EphB6 are Eph family receptors for Ephrin family ligands. In normal cells, EphA2 negatively regulates cell growth and invasiveness. EphA2 is overexpressed by many human cancers, and is often associated with poor prognostic features. The clinical significance of the expression of EphA2 was observed in breast, prostate, colon, skin, cervical, ovarian, and lung cancers. EphA2 may serve as a novel target for bladder cancer, colonic adenocarcinoma and ovarian cancer therapy.
Uniprot ID:	P29317
NCBI:	NP_004422.2
GeneID:	1969
Host / Isotype:	Mouse / IgM
Clone:	1B3C7
Immunogen:	Purified recombinant fragment of EphA2 expressed in E. Coli.
Format:	State: Ascitic fluid Preservatives: 0.03% Sodium Azide
Applications:	ELISA: 1/10000. Western Blot: 1/500 - 1/2000. Immunohistochemistry on Paraffin Sections: 1/200 - 1/1000. Other applications not tested. Optimal dilutions are dependent on conditions and should be determined by the user.
Specificity:	Recognizes EPH receptor A2 (EphA2)
Species Reactivity:	Tested: Human.
Storage:	Store the antibody undiluted at 2-8°C for one month or (in aliquots) at -20°C for longer. Avoid repeated freezing and thawing. Shelf life: one year from despatch.
General Readings:	1. Shaji Abraham, Deborah W. Knapp, Liang Cheng. Clin Cancer Res. 2006 Jan 15;12(2):353-60. 2. Landen CN, Kinch MS, Sood AK. EphA2 as a target for ovarian cancer therapy. Expert Opin Ther Targets. 2005 Dec;9(6):1179-87. PubMed PMID: 16300469.

Pictures:

Immunohistochemical analysis of paraffin-embedded human skin carcinoma (left) and pancreas carcinoma (right) tissue, showing cytoplasmic localization using EphA2 antibody Cat.-No AM06122SU-N with DAB staining.



Western blot analysis using EphA2 antibody Cat.-No AM06122SU-N against NIH/3T3 cell lysate.

