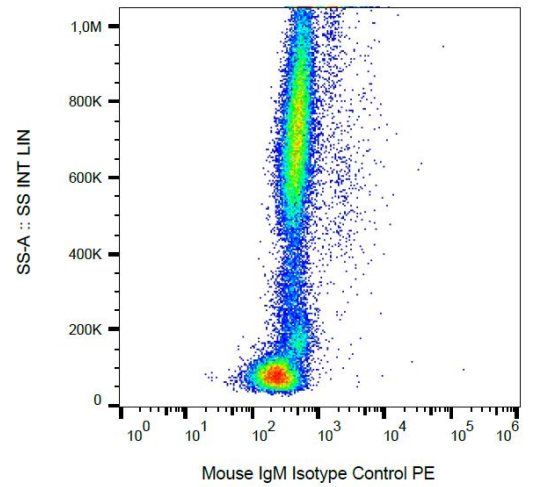


AM03111PU-N**Mouse IgM Isotype Control - Purified**

Quantity:	0.1 mg
Concentration:	1.0 mg/ml
Background:	The specificity of staining by monoclonal antibodies to target antigens should be verified by establishing the amount of non-specific antibody binding. Especially at higher concentration (more than 15 µg/ml) the antibody staining usually has consignable background. To this end a non-reactive immunoglobulin of the same isotype is included as a negative control for each specific monoclonal antibody used in a particular immunoassay. The monoclonal antibody PFR-03, generated against a plant pathogen, does not cross-react with other species, and hence all the background that could be observed when working with this antibody would be a result of general nonspecific interactions between an mouse IgM molecule and the respective sample under the particular conditions. This shall help the customer to set up the experimental conditions so that the nonspecific binding of any antibody is abolished.
Host / Isotype:	Mouse / IgM
Recommended Isotype Controls:	SM13P
Clone:	PFR-03
Format:	State: Liquid purified IgG fraction (> 95% pure by SDS-PAGE) Purification: Precipitation Methods Buffer System: Tris buffered saline (TBS) with 15 mM sodium azide, approx. pH 8.
Applications:	Flow Cytometry. Control Experiments: The antibody is suitable for control experiments when performing cell surface staining as well as intracellular staining. Recommended Dilutions: The reagent is intended as Isotype Control for Flow Cytometry analysis to establish the amount of non-specific antibody binding. For your particular experiment, use the same concentration of this Isotype Control antibody as the recommended working concentration of the antigen-specific antibody. Also, when working with prediluted antibodies, dilute the Isotype Control to the same concentration as is the concentration of the antigen-specific antibody in the prediluted antibody solution you are using. If under particular experimental conditions the background signal of the isotype control is too high (usually when working concentrations of used antibodies are above 10 µg per ml of incubation mixture), change the conditions of your experiment to reduce the background. Other applications not tested. Optimal dilutions are dependent on conditions and should be determined by the user.
Specificity:	This Mouse IgM monoclonal antibody (clone PFR-03) reacts with undefined epitope on a plant pathogen. Negative Species: Human, Porcine, Mouse, Rat, Other species Not tested (expected Negative).

Storage: Store the antibody undiluted at 2-8°C.
DO NOT FREEZE!
 Shelf life: one year from despatch.

Pictures: Example of nonspecific mouse IgM (PFR-03) PE signal on human peripheral blood; surface staining, 3 µg/ml.



Example of nonspecific mouse IgM (PFR-03) FITC signal on human peripheral blood; surface staining, 1 µg/ml.

