



Rabbit anti MMP13 Antibody

Alternate Names: Matrix Metalloproteinase-13; Collagenase-3

Order Information

Description: Rabbit anti -MMP-13
 Catalogue#: 602-840
 Lot#: See the label
 Size: 100 ug/200 ul
 Host: Rabbit
 Clone: N/A
 Application: ELISA, WB, IHC
 Reactivity: Hu, Rt, Ms

ANTIGEN PREPARATION

A synthetic peptide corresponding to the hinge of human MMP13 protein. This sequence is identical among the human, mouse and rat origins.

BACKGROUND

Proteins of the matrix metalloproteinase (MMP) family are involved in the breakdown of extracellular matrix in normal physiological processes, such as embryonic development, reproduction, and tissue remodeling, as well as in disease processes, such as arthritis and metastasis. Most MMP's are secreted as inactive proproteins which are activated when cleaved by extracellular proteinases. Unpaired specific MMPs by tissue inhibitor of MMPs (TIMPs) are related in the invasive tumor processes. Interstitial collagenase (MMP-1)(52 kDa), gelatinase A/type IV collagenase (MMP-2) (72 kDa), and gelatinase B/type V collagenase (MMP-9) (92 kDa) dissolve extracellular matrix (ECM) and may initiate and promote angiogenesis. Human collagenase-3 (MMP13) is a recently identified member of the matrix metalloproteinase (MMP) family that is expressed in breast carcinomas and in articular cartilage from arthritic patients. This protein is secreted as a 60 kDa proenzyme and active form of 48 kDa by cleavage.

PURIFICATION

The Rabbit IgG is purified by Epitope Affinity Purification.

SPECIFICITY

This antibody recognizes ~60 and 48 kDa human MMP-13. It also reacts with mouse and rat. The other species are not tested

FORMULATION

This affinity purified antibody is supplied in sterile Phosphate-buffered saline (pH7.2) containing antibody stabilizer

STORAGE

The antibodies are stable for 12 months from date of receipt when stored at -20°C to -70°C. The antibodies can be stored at 2°C-8°C for three month without detectable loss of activity. Avoid repeated freezing-thawing cycles.

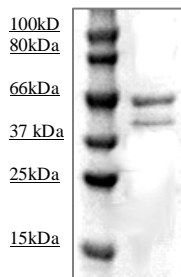
APPLICATIONS/SUGGESTED WORKING DILUTIONS

Western Blot	0.1-1 µg/ml
ELISA	0.01-0.1 µg/ml
Immunoprecipitation	2-5 µg/ml
IHC	1:100
Flow cytometry	Not tested

MOLECULAR WEIGHT:	60kDa, 48 kDa
POSITIVE CONTROL:	SW 1353 cell
CELLULAR LOCATION:	Cytoplasmic

Optimal dilutions should be determined by researchers for the specific applications.

DATA ATTACHMENTS



Western Blot: The protein derived from the SW1353 whole cell lysate was resolved onto 12% SDS-PAGE, transferred to NC membrane, followed by an immunoblotting with Rabbit anti-MMP-13 (Cat#602-840) at 1:1000 .

REFERENCES:

Tania R. Lizarbe, et al. Nitric oxide elicits functional MMP-13 protein-tyrosine nitration during wound repair. *The FASEB Journal*. 2008;22:3207-3215.

FOR RESEARCH USE ONLY.

AbboMax, Inc 1161 Ringwood Ct. Suite 100, San Jose, California 95131, USA
 1 408-321-9898 (Tel). 1 408-321-9896 (Fax). 1-866-628-9898 www.abbomax.com info@abbomax.com