



**Order Information**

Description: Rabbit anti -p56<sup>lck</sup> (Paired Y505)  
 Non-phosphospecific  
 Catalogue#: 602-350  
 Lot#: See the label  
 Size: 100 ug/200 ul  
 Host: Rabbit  
 Clone: N/A  
 Application: ELISA, WB, IHC  
 Reactivity: Hu, Rt, Ms, Bv, Dg

**Rabbit anti- p56<sup>lck</sup> (Non-phosphospecific)**

Synonym: Lymphocyte specific protein tyrosine kinase, LCK, p56-LCK, LSK.

**ANTIGEN PREPARATION**

A synthetic peptide surrounding -GQYQP- without phosphorylation at tyrosine 505 of p56<sup>lck</sup> protein from human, rat, bovine, dog origin.

**BACKGROUND**

Lymphocyte specific protein tyrosine kinase (LCK) belongs to Src family protein-tyrosine kinase. It is essential for T-cell development and function. The activity p56<sup>lck</sup> is regulated by phosphorylation and dephosphorylation of two critical tyrosine residues Tyr394 and Tyr505. Tyr394 and Tyr505 are autophosphorylated after p56<sup>lck</sup> activation, whereas phosphorylation of Tyr505 is believed to be due to p50<sup>csk</sup> which negatively modulates P56<sup>lck</sup> activity. Autophosphorylation at Tyr505 of P56<sup>lck</sup> may represent an accessory mechanism for the down-regulation of the tyrosine kinase activity of P56<sup>lck</sup>.

**PURIFICATION**

The Rabbit IgG is purified by site-directed Epitope Affinity Purification.

**FORMULATION**

This affinity purified antibody is supplied in sterile phosphate buffered saline (pH7.2) containing antibody stabilizer

**SPECIFICITY**

This antibody recognizes p56<sup>lck</sup> protein without phosphorylation at Tyr505. It does not recognize phosphorylated peptide. This antibody is human, rat and mouse reactive. The other species are not tested.

**STORAGE**

The antibodies are stable for 12 months from date of receipt when stored at -20°C to -70°C. The antibodies can be stored at 2°C-8°C for three month without detectable loss of activity. Avoid repeated freezing-thawing cycles.

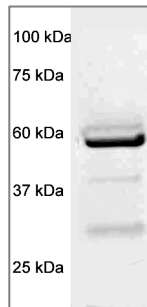
**APPLICATIONS/SUGGESTED WORKING DILUTIONS**

Western Blot	0.1-1 µg/ml
ELISA	0.01-0.1 µg/ml
Immunoprecipitation	2-5 µg/ml
IHC	Not tested
Flow cytometry	Not tested

<b>MOLECULAR WEIGHT:</b>	56 kDa
<b>POSITIVE CONTROL:</b>	Jurkat cells
<b>CELLULAR LOCATION:</b>	Cytoplasmic

Optimal dilutions should be determined by researchers for the specific applications.

**DATA ATTACHMENTS**



**Western Blot:** The whole cell lysate derived from Jurkat was separated in 10% SDS-PAGE, transferred onto NC membrane, and immunoblotted by Rabbit anti-p56lck (paired Y505) (Cat#602-350) antibody at 1:500. An immunoreactive band around ~56 kDa is observed.

**REFERENCES**

**Ngozi Monu et al.** Suppression of Proximal T Cell Receptor Signaling and Lytic Function in CD8<sup>+</sup> Tumor-Infiltrating T Cells. Cancer Res 2007; 67(23):11447-54.

**FOR RESEARCH USE ONLY.**