



**Order Information**

Description: Rabbit anti –ANP/BNP  
 Catalogue#: 601-700  
 Lot#: See the label  
 Size: 100 ug/200 ul  
 Host: Rabbit  
 Clone: N/A  
 Application: ELISA, WB, IHC  
 Reactivity: Hu

**Rabbit anti-ANP/BNP (CT) Polyclonal Antibody**

**Synonym: Atrial Natriuretic peptide (ANP), Brain natriuretic peptide (BNP); BNP-32; Brain natriuretic protein**

**ANTIGEN PREPARATION**

A 10 aa synthetic peptide derived from C-terminus human ANP/BNP protein.

**BACKGROUND**

Brain natriuretic peptide (BNP) circulates in blood as a peptide hormone with natriuretic, vasodilatory and renin inhibitory properties. BNP is secreted predominantly by the left ventricular myocytes in response to volume expansion and pressure overload. BNP belongs to a family of structurally similar peptide hormones, which includes atrial natriuretic peptide (ANP), BNP, C-type natriuretic peptide (CNP) and urodilatin. These peptides are characterized by a common 17 amino acid ring structure with a disulfide bond between two cystein residues. This ring structure shows high homology between different natriuretic peptides. BNP is a 32 amino acid peptide with disulfide bond between the cystein residues Cys10 and Cys26. In earlier studies it has been demonstrated that BNP concentration in blood increases with the severity of congestive heart failure. Quantitative measurement of BNP in blood provides an objective indicator of congestive heart failure severity

**PURIFICATION**

The Rabbit IgG is purified by Epitope Affinity Purification.

**SPECIFICITY**

This antibody recognizes human ANP/BNP protein. The other species were not tested.

**FORMULATION**

This affinity purified antibody is supplied in sterile Phosphate-buffered saline (pH7.2) containing antibody stabilizer

**STORAGE**

The antibodies are stable for 12 months from date of receipt when stored at –20°C to –70°C. The antibodies can be stored at 2°C-8°C for three month without detectable loss of activity. Avoid repeated freezing-thawing cycles.

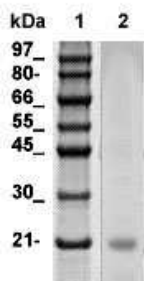
**APPLICATIONS/SUGGESTED WORKING DILUTIONS**

Western Blot	0.1-1 µg/ml
ELISA	0.01-0.1 µg/ml
Immunoprecipitation	Not tested
IHC	2-5 µg/ml
Flow cytometry	Not tested

<b>MOLECULAR WEIGHT:</b>	~18 kDa
<b>POSITIVE CONTROL:</b>	Recombinant BNP protein
<b>CELLULAR LOCATION:</b>	Cytoplasmic/secreted

Optimal dilutions should be determined by researchers for the specific applications.

**DATA ATTACHMENTS**



**Western Blot:** the 134 aa of human BNP recombinant protein was resolved onto 12% SDS-PAGE, transferred onto NC membrane, and immunoblotted by Rabbit anti – ANP (Cat#601-700) antibody at 1:500 . An immunoreactive band around ~18 kDa was observed.

**REFERENCES**

**Antonio Marchini**, et al. BNP is a transcriptional target of the short stature homeobox gene SHOX. Human Molecular Genetics, 2007, Vol. 16, No. 24 3081–3087.

**FOR RESEARCH USE ONLY.**