



## Rabbit anti MMP-1 Polyclonal Antibody

### ANTIGEN PREPARATION

A synthetic peptide corresponding to C-term of human MMP-1.

### PURIFICATION

The Rabbit IgG is purified by Epitope affinity purification

### FORMULATION

This affinity purified antibody is supplied in sterile Phosphate-buffered saline (pH7.2) containing antibody stabilizer.

### STORAGE

The antibodies are stable for 12 months from date of receipt when stored at  $-20^{\circ}\text{C}$  to  $-70^{\circ}\text{C}$ . Upon initial thawing, apportion into working aliquots and store at  $-70^{\circ}\text{C}$  for up to six months. The antibodies can be stored at  $2^{\circ}\text{C}$ - $8^{\circ}\text{C}$  for one month without detectable loss of activity. Avoid repeated freezing-thawing cycles.

### SPECIFICITY

This antibody recognizes ~72 kDa of MMP-1 (Interstitial collagenase/ gelatinase A). This antibody reacts with human, rat and mouse. The other species are not tested.

### APPLICATIONS AND SUGGESTED WORKING DILUTIONS

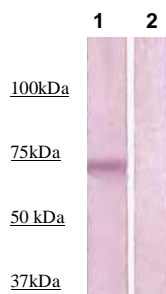
Western Blot	0.1-1 $\mu\text{g/ml}$
ELISA	0.01-0.1 $\mu\text{g/ml}$
Immunoprecipitation	2-5 $\mu\text{g/ml}$
IHC	2-5 $\mu\text{g/ml}$
Flow cytometry	Not tested

**Optimal dilutions should be determined by researchers for the specific applications.**

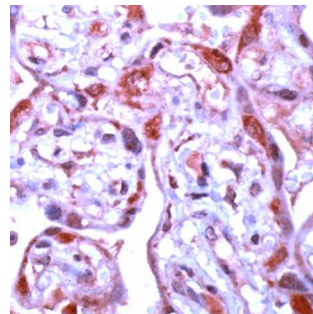
**MOLECULAR WEIGHT:** 72 kDa

**POSITIVE CONTROL:** Placenta, bladder, Breast or ovarian carcinoma.

**CELLULAR LOCATION:** cytoplasmic



**Western Blot:** The cell lysate derived from PMA-stimulated A431 was resolved onto 10% SDS-PAGE, transferred onto NC membrane, and immunoprobed by Rabbit anti-MMP-1 (Cat#500-7964) at 1:500. An immunoreactive band is observed around ~72 kDa (1). This band is abolished by pre-incubation with immunizing peptide (2).



Human placenta stained with Anti-MMP-1 antibody, (Cat# 500-7964) at 1:100 for 10 min @ RT. Staining of formalin-fixed tissue requires boiling tissue sections in 10 mM Citrate Buffer, pH 6.0 for 10 min followed by cooling at RT for 20 min.

### Order Information

Description:	Rabbit anti MMP-1
Catalogue#:	500-7964
Lot#:	See the label
Size:	100 $\mu\text{g}/200 \text{ ul}$
Host:	Rabbit
Clone:	N/A
Application:	ELISA, WB, IHC
Reactivity:	Hu/Rt/Ms

**FOR RESEARCH USE ONLY.**