



Rabbit anti IKK β Polyclonal Antibody

Synonym: inhibitor of nuclear factor kappa-B kinase subunit beta;
IKK-beta, IKK2, IKKB, NFKB1KB

ANTIGEN PREPARATION

The full length of human IKK β recombinant protein.

BACKGROUND

IKK beta (I-Kappa-B kinase-beta) is a member of the IKK complex which is composed of IKK alpha, IKK beta, IKK gamma and IKAP. IKK is a serine protein kinase which can activate NF- κ B. Phosphorylation of I-Kappa-B on a serine residue by the IKK complex frees NF- κ B from I-Kappa-B and marks it for degradation via ubiquitination. IKK beta has been shown to activate NF- κ B and phosphorylate IKB alpha and beta. Phosphorylation of 2 sites at the activation loop of IKK beta is essential for activation of IKK by TNF and IL1. Once activated, IKK beta autophosphorylates which in turn decreases IKK activity and prevents prolonged activation of the inflammatory response. Additionally, IKK beta activity can also be regulated by MEKK1.

PURIFICATION

The rabbit polyclonal antibody is purified by affinity purification.

SPECIFICITY

This antibody reacts with human, mouse and rat. The other species are not tested.

APPLICATIONS/SUGGESTED WORKING DILUTIONS

Western Blot	0.1-1 μ g/ml
ELISA	0.01-0.1 μ g/ml
Immunoprecipitation	2-5 μ g/ml
IHC	2-5 μ g/ml
Flow cytometry	Not tested

FORMULATION

This affinity purified antibody is supplied in sterile Phosphate-buffered saline (pH7.2) containing antibody stabilizer

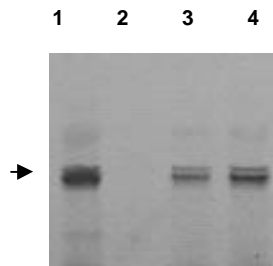
STORAGE

The antibodies are stable for 12 months from date of receipt when stored at -20°C to -70°C . The antibodies can be stored at 2°C - 8°C for three month without detectable loss of activity. Avoid repeated freezing-thawing cycles.

Order Information

Description:	Rabbit anti IKK β
Catalogue#:	500-7714
Lot#:	See the label
Size:	100 μ g/200 μ l
Host:	Rabbit
Clone:	N/A
Application:	WB
Reactivity:	Hu,Ms,Rt

DATA ATTACHMENTS:



WB: Samples loaded onto 10% SDS-PAGE, and transferred onto NC Membrane followed by the Rabbit anti-IKKb (Cat#500-7714) at 1:500. The loading samples are listed below:
1) The full length human IKK-beta recombinant protein
2) N/A
3) MCF-7 whole cell lysate
4) HELA whole cell lysate.

REFERENCES:

DiDonato, J.A., Hayakawa, M., Rothwarf, D.M., Zandi, E. and Karin, M. A cytokine-responsive I kappa B kinase that activates the transcription factor NF-kappa B. Nature 388 (6642), 548-554 (1997)

FOR RESEARCH USE ONLY.



FOR RESEARCH USE ONLY.

AbboMax, Inc 1161 Ringwood Ct. Suite 100, San Jose, California 95131, USA
1 408-321-9898 (Tel). 1 408-321-9896 (Fax). 1-866-628-9898 www.abbomax.com info@abbomax.com