



Order Information

Description: Rabbit anti TGFβ R1
 Catalogue#: 500-12344
 Lot#: See the label
 Size: 100 ug/200 ul
 Host: Rabbit
 Clone: N/A
 Application: ELISA, WB, IHC
 Reactivity: Hu, Rt, Ms

Rabbit anti TGF-βR1 Polyclonal Antibody

Synonym: Transforming Growth Factor beta Receptor Type 1 (TGFBR1); SKR4; ALK-5

ANTIGEN PREPARATION

A synthetic peptide derived from internal sequence of human TGFbeta receptor type-1. This sequence is also identical within human, rat, mouse, chicken, bovine and dog species.

BACKGROUND

p21-activated protein kinase (PAK) serine/threonine kinases are important effectors of Rho family GTPases and have been implicated in the regulation of cell morphology and motility, as well as in cell transformation. The phosphorylation of serine 474 as the likely autophosphorylation site in the kinase domain of PAK4 occurs *in vivo*. PAK4 is frequently over-expressed in human tumor cell lines of various tissue origins, indicates that the phosphorylation of PAK4 is required in oncogenic transformation and Ras-driven, anchorage-independent growth.

PURIFICATION

The Rabbit IgG is purified by Epitope Affinity Purification.

SPECIFICITY

This antibody recognizes PAK4 protein. It does not cross react to other PAK1, PAK2 or PAK3. This antibody reacts with human, rat and mouse. The other species are not tested.

FORMULATION

This affinity purified antibody is supplied in sterile Phosphate-buffered saline (pH7.2) containing antibody stabilizer

STORAGE

The antibodies are stable for 12 months from date of receipt when stored at -20°C to -70°C. The antibodies can be stored at 2°C-8°C for three month without detectable loss of activity. Avoid repeated freezing-thawing cycles.

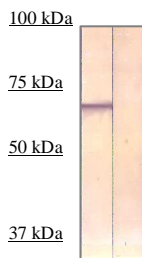
APPLICATIONS/SUGGESTED WORKING DILUTIONS

Western Blot	0.1-1 µg/ml
ELISA	0.01-0.1 µg/ml
Immunoprecipitation	2-5 µg/ml
IHC	Not tested µg/ml
Flow cytometry	Not tested

MOLECULAR WEIGHT:	68 kDa
POSITIVE CONTROL:	HEK293
CELLULAR LOCATION:	N/A

Optimal dilutions should be determined by researchers for the specific applications.

DATA ATTACHMENTS



WB: The cell lysate derived from HEK293 cells was immunoprobed by Rabbit anti-PAK4 (Cat#600-040) at 1:500. An immunoreactive band is observed around ~68kDa (lane 1). This band is blocked by pre-incubation with immunizing peptide (Lane 2)

REFERENCES:

FOR RESEARCH USE ONLY.



Marinella G. Callow et al. Requirement for PAK4 in the Anchorage-independent Growth of Human Cancer Cell Lines. (2002)
J. Biol. Chem. 277 (1), 550–558.

FOR RESEARCH USE ONLY.

AbboMax, Inc 1161 Ringwood Ct. Suite 100, San Jose, California 95131, USA
1 408-321-9898 (Tel). 1 408-321-9896 (Fax). 1-866-628-9898 www.abbomax.com info@abbomax.com