

Contactin / F3 Monoclonal Antibody

ORDERING INFORMATION

Catalog No.: 42050 (clone S73-20)

Size: 100ug in PBS, pH 7.4, 50% glycerol, 0.09% sodium azide. Purified by Protein G affinity chromatography.

BACKGROUND

Contactin/F3, a cell adhesion molecule, is a glycosylphosphatidylinositol (GPI)-anchored protein that is expressed in neurons and glia. It has been shown to interact with and enhance surface expression of sodium channels Nav1.2 and Nav1.9. Additional studies indicate that contactin co-immunoprecipitates with Nav1.3.

SPECIFICATION SUMMARY

Antigen: Synthetic peptide corresponding to aa21-37 (D/EFTWHRRYGHGVSEEDKC) extracellular domain of rat contactin (accession no. A57112).

Host Species: Mouse

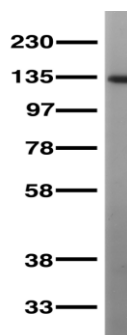
Antibody Class: IgG1

SPECIFICITY

This antibody recognizes human, mouse and rat contactin.

APPLICATIONS

Immunoblotting: use at 1ug/ml. A band of ~120kDa is detected.



Immunoblot on adult rat brain membrane

Immunohistochemistry/Immunocytochemistry: use at 0.1-1.0ug/ml.

Immunofluorescence: use at 1.0-10ug/ml.

Positive control: Rat brain lysate

These are recommended concentrations; enduser should determine optimal concentrations for their applications.

DILUTION INSTRUCTIONS

Dilute in PBS or medium which is identical to that used in the assay system.

STORAGE AND STABILITY

This antibody is stable for at least one (1) year at -20°C.

For in vitro investigational use only. Not intended for diagnostic or therapeutic applications.