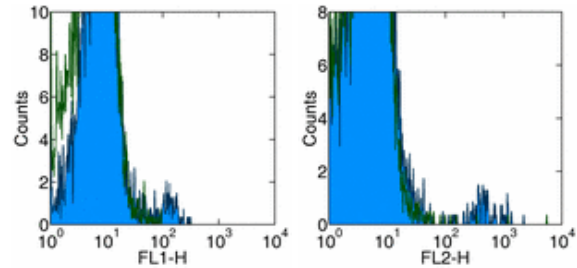


Product Information

Contents: Functional Grade Purified anti-human $\gamma\delta$ TCR
Catalog Number: 16-9959
Sizes: 50 μ g, 500 μ g
Formulation: Phosphate buffer pH 7.2,
150 mM NaCl, No NaN₃
Storage Conditions: Store at 4°C.
Avoid repeated freeze/thaw cycles.
KEEP CONTENT STERILE.
Endotoxin Level: Less than 0.001 ng/ μ g antibody, as determined
by the LAL assay.
Clone: B1.1
Isotype: Mouse IgG1, κ



Surface staining of normal human peripheral blood cells with anti-human TCR gamma/delta (B1.1) FITC (left), and PE (right). Appropriate isotype controls were used (open histogram). Cells in the lymphocyte population were used for analysis.

Available Formats of This Product

Cat. No.	Format	Excite (nm)	Emit (nm)	Reported Applications
11-9959	FITC anti-human gamma delta TCR (gdTCR)	488	518	FC
12-9959	PE anti-human gamma delta TCR (gdTCR)	488	575	FC
13-9959	Biotin anti-human gamma delta TCR (gdTCR)	N/A	N/A	FC
14-9959	Affinity Purified anti-human gamma delta TCR (gdTCR)	N/A	N/A	FC IHC
16-9959	Functional Grade* Purified anti-human gamma delta TCR (gdTCR)	N/A	N/A	FC

*Functional Grade™ (FG™): Azide-free, sterile-filtered, and endotoxin < 0.001 ng/ μ g.
Purified: Contains azide, not sterile-filtered, and not endotoxin tested.

Description

The B1.1 monoclonal antibody reacts with the human $\gamma\delta$ TCR complex. $\gamma\delta$ TCR is expressed by a small subset of T cells in the thymus, peripheral lymphoid tissues, intestinal epithelium, and epidermis. The exact specificity, ligand and function of $\gamma\delta$ TCR-bearing T cells are not yet fully understood; it is suggested that these cells recognize bacterial ligands and some tumor cells in the context of MHC class I-like gene products and play a role in regulation of the immune response and during bacterial infection. This monoclonal can be used as a phenotypic marker for $\gamma\delta$ TCR-expressing T cells.

Usage

For research use only, not for diagnostic or therapeutic use. The B1.1 antibody has been reported for use in flow cytometric analysis.

Applications Tested

The B1.1 antibody has been tested by flow cytometric analysis of human peripheral blood leukocytes. This can be used at less than or equal to 1 μ g per 100 μ l blood (or per 1 million cells in 100 μ l total staining volume). It is recommended that the antibody be carefully titrated for optimal performance in the assay of interest.

Related Products

Cat. 11-4011 FITC Anti-Mouse IgG
Cat. 13-4013 Biotin Anti-Mouse IgG (clone Polyclonal)
Cat. 11-4317 Streptavidin-FITC (Fluorescein isothiocyanate)
Cat. 12-4317 Streptavidin-PE (Phycoerythrin)
Cat. 17-4317 Streptavidin Allophycocyanin (SA-APC)
Cat. 16-4714 Functional Grade Purified Mouse IgG1, K Isotype Control

- Cat. 11-9959 FITC anti-human gamma delta TCR (gdTCR) (clone B1.1)
 - Cat. 12-9959 PE anti-human gamma delta TCR (gdTCR) (clone B1.1)
 - Cat. 13-9959 Biotin anti-human gamma delta TCR (gdTCR) (clone B1.1)
 - Cat. 14-9959 Affinity Purified anti-human gamma delta TCR (gdTCR) (clone B1.1)
-

References

- De Libero, G. (1997). "Sentinel function of broadly reactive human gamma delta T cells." *Immunol Today* 18(1): 22-6.
- Nick, S., P. Pileri, et al. (1995). "T cell receptor gamma delta repertoire is skewed in cerebrospinal fluid of multiple sclerosis patients: molecular and functional analyses of antigen-reactive gamma delta clones." *Eur J Immunol* 25(2): 355-63.
- Merlo, A., L. Filgueira, et al. (1993). "T-cell receptor V-gene usage in neoplasms of the central nervous system. A comparative analysis in cultured tumor infiltrating and peripheral blood T cells." *J Neurosurg* 78(4): 630-7.

Copyright © 2000-2005 eBioscience, Inc.
Product For Research Use Only: Not for further distribution without written consent.

