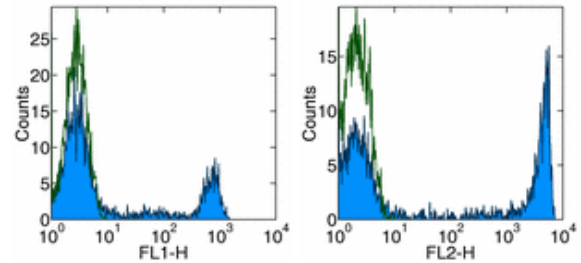


## Product Information

Contents: Functional Grade Purified anti-human CD8a  
Catalog Number: 16-0089  
Sizes: 50 ug, 500 ug  
Formulation: Phosphate buffer pH 7.2,  
150 mM NaCl, No NaN<sub>3</sub>  
Storage Conditions: Store at 4°C.  
Avoid repeated freeze/thaw cycles.  
**KEEP CONTENT STERILE.**  
Endotoxin Level: Less than 0.001 ng/ug antibody, as determined  
by the LAL assay.  
Clone: HIT8a  
Isotype: Mouse IgG1, κ  
HLDA No.: V 5T-CD08.10



Surface staining of normal human peripheral blood cells with anti-human CD8a (HIT8a) FITC (left), and PE (right). Autofluorescence is indicated by open histogram. Cells in the lymphocyte population were used for analysis.

## Available Formats of This Product

Cat. No.	Format	Excite (nm)	Emit (nm)	Reported Applications
11-0089	FITC anti-human CD8 (CD8a; alpha chain)	488	518	FC
12-0089	PE anti-human CD8 (CD8a; alpha chain)	488	575	FC
13-0089	Biotin anti-human CD8 (CD8a; alpha chain)	N/A	N/A	FC
14-0089	Affinity Purified anti-human CD8 (CD8a; alpha chain)	N/A	N/A	FC IH/F
16-0089	Functional Grade* Purified anti-human CD8 (CD8a; alpha chain)	N/A	N/A	FC

\*Functional Grade™ (FG™): Azide-free, sterile-filtered, and endotoxin < 0.001 ng/μg.  
Purified: Contains azide, not sterile-filtered, and not endotoxin tested.

## Description

The HIT8a monoclonal antibody reacts with the human CD8a molecule, an approximately 32-34 kDa cell surface receptor expressed either as a heterodimer with the CD8 β chain (CD8 αβ) or as a homodimer (CD8 αα). A majority of thymocytes and a subpopulation of mature T cells and NK cells express CD8a. CD8 binds to MHC class I and through its association with protein tyrosine kinase p56lck plays a role in T cell development and activation of mature T cells.

## Usage

For research use only, not for diagnostic or therapeutic use. The HIT8a antibody has been reported for use in flow cytometric analysis.

## Applications Tested

The HIT8a antibody has been tested by flow cytometric analysis of human peripheral blood leukocytes. This can be used at less than or equal to 0.5 μg per 100 μl blood (or per 1 million cells in 100 μl total staining volume). It is recommended that the antibody be carefully titrated for optimal performance in the assay of interest.

## Related Products

Cat. 10-0088 APC-Cy7 anti-human CD8 (CD8a; alpha chain) (clone RPA-T8)  
Cat. 11-0088 FITC anti-human CD8 (CD8a; alpha chain) (clone RPA-T8)  
Cat. 12-0088 PE anti-human CD8 (CD8a; alpha chain) (clone RPA-T8)  
Cat. 14-0088 Affinity Purified anti-human CD8 (CD8a; alpha chain) (clone RPA-T8)  
Cat. 15-0088 PE-Cy5 anti-human CD8 (CD8a; alpha chain) (clone RPA-T8)  
Cat. 17-0088 APC anti-human CD8 (CD8a; alpha chain) (clone RPA-T8)

Cat. 25-0088 PE-Cy7 anti-human CD8 (CD8a; alpha chain) (clone RPA-T8)  
Cat. 11-0089 FITC anti-human CD8 (CD8a; alpha chain) (clone HIT8a)  
Cat. 12-0089 PE anti-human CD8 (CD8a; alpha chain) (clone HIT8a)  
Cat. 13-0089 Biotin anti-human CD8 (CD8a; alpha chain) (clone HIT8a)  
Cat. 14-0089 Affinity Purified anti-human CD8 (CD8a; alpha chain) (clone HIT8a)  
Cat. 11-4011 FITC Anti-Mouse IgG  
Cat. 13-4013 Biotin Anti-Mouse IgG (clone Polyclonal)  
Cat. 11-4317 Streptavidin-FITC (Fluorescein isothiocyanate)  
Cat. 12-4317 Streptavidin-PE (Phycoerythrin)  
Cat. 17-4317 Streptavidin Allophycocyanin (SA-APC)  
Cat. 16-4714 Functional Grade Purified Mouse IgG1, K Isotype Control

---

## References

---

Schlossman, S., L. Bloumsell, et al. eds. 1995. Leucocyte Typing V: White Cell Differentiation Antigens. Oxford University Press. New York.

Copyright © 2000-2005 eBioscience, Inc.  
Product For Research Use Only: Not for further distribution without written consent.

