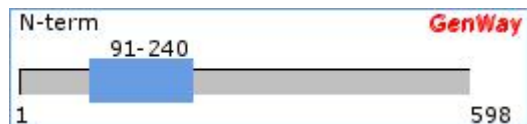


Goodpasture antigen-binding protein, Antibody

EC 2.7.1.37, GPBP, Collagen type IV alpha 3 binding protein, StAR-related lipid transfer protein 11, StARD11, START domain-containing protein 11

Catalog Number: 15-288-22128A	
SwissProt Accession #: Q9Y5P4	C43BP_HUMAN
NCBI Accession #: NP_112729.1	GI #: 14165452
Immunogen Sequence Position: 91-240	Length (aa): 598
Mol. Weight (Da): 70835	



Linear Protein Map with Immunogenic Epitope Marked (sequence source from above GI#)

Source: Chicken

Purity: Immunoaffinity Purified

Clonality: Polyclonal

Crossreactivity: Human, mouse, rat (Based on protein sequence homology)

Format: Phosphate-Buffered Saline. No preservatives added.

Storage: 4°C for short term (weeks) and -20°C for long term. Avoid frequent freeze and thaw.

Stability: 6-12 months at -20°C.

Shipping: Products may be shipped on ice pack.

Precautions: This product is for *in vitro* research use only. Not for use in diagnostic or therapeutic procedures.

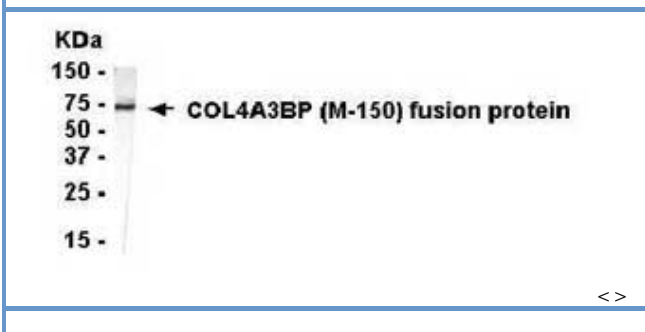
Important Notes: During shipment, small volumes of product will occasionally become entrapped in the seal of the product vial. For products with volumes of 200 µL or less, we recommend gently tapping the vial on a hard surface or briefly centrifuging the vial in a tabletop centrifuge to dislodge any liquid in the container's cap.

APPLICATIONS:

Western Blot	Tested
ELISA, ICC, IHC	Not Tested

TESTING: (secondary reagents and protocols)

Western Blot: E coli-derived fusion protein as test antigen. Affinity-purified IgY dilution: 1:2000, Goat anti-IgY-HRP dilution: 1:1000. Colorimetric method for signal development.



TARGET DESCRIPTION:

FUNCTION: Phosphorylates on Ser and Thr residues the Goodpasture autoantigen (in vitro). **Isoform 2** seems to be less active.

CATALYTIC ACTIVITY: ATP + a protein = ADP + a phosphoprotein.

SUBUNIT: Interacts with COL4A3.

SIMILARITY: Contains 1 **START domain**.

TISSUE SPECIFICITY: Widely expressed.

OMIM: 604677; gene. [NCBI / EBI]

CATEGORIES RELATED TO TARGET PROTEIN:

TISSUES: Intracellular, Endoplasmic Reticulum, Cytoplasm, Plasma Membrane, Phospholipids, Endoplasmic Reticulum Membrane, Golgi Membrane

PROTEIN FUNCTIONS: Phosphotransferases, Glycosphingolipid Metabolism, Peptide Hydrolases

BACKGROUND REFERENCES:

- [1] Granero, F., et al. A human-specific TNF-responsive promoter...
- [2] Borza, D.B., et al. Goodpasture autoantibodies unmask crypti...
- [3] Kumagai, K., et al. CERT mediates intermembrane transfer of ...
- [4] Hanada, K., et al. Molecular machinery for non-vesicular tr...
- [5] Raya, A., et al. Goodpasture antigen-binding protein, the...

Copyright: This GenWay TDS is copyrighted. It is produced based partially on data from [Swiss-Prot/TrEMBL](#) and [NCBI](#).

Disclaimer: For documents and software available from this server, GenWay neither warrants nor assumes any legal liability or responsibility for the accuracy, completeness or utility of any information, product or process disclosed.