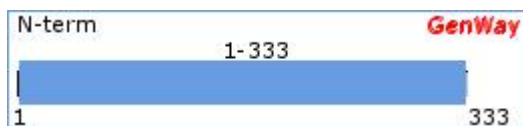


# Suppressor of G2 allele of SKP1 homolog, Antibody

Sgt1, Putative 40-6-3 protein



**Catalog Number:** 15-288-21948F  
SwissProt Accession #: Q9Y2Z0 SUGT1\_HUMAN  
NCBI Accession #: NP\_006695.1 GI #: 5730041  
Immunogen Sequence Position: 1-333 Length (aa): 333  
Mol. Weight (Da): 40893



Linear Protein Map with Immunogenic Epitope Marked (sequence source from above GI#)

**Source:** Chicken

**Purity:** Immunoaffinity Purified

**Clonality:** Polyclonal

**Crossreactivity:** Human

**Format:** Phosphate-Buffered Saline. No preservatives added.

**Storage:** 4°C for short term (weeks) and -20°C for long term. Avoid frequent freeze and thaw.

**Stability:** 6-12 months at -20°C.

**Shipping:** Products may be shipped on ice pack.

**Precautions:** This product is for *in vitro* research use only. Not for use in diagnostic or therapeutic procedures.

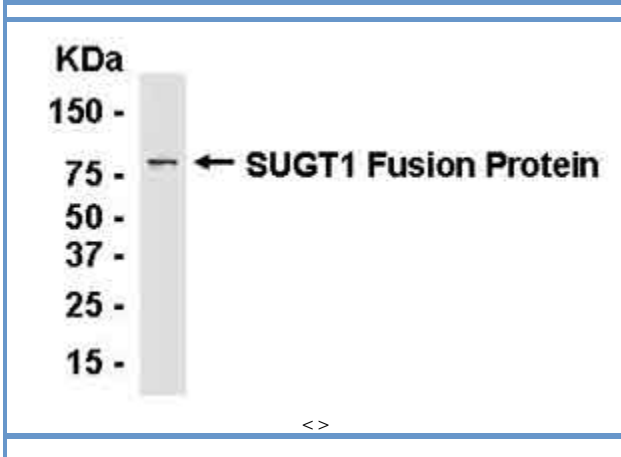
**Important Notes:** During shipment, small volumes of product will occasionally become entrapped in the seal of the product vial. For products with volumes of 200 µL or less, we recommend gently tapping the vial on a hard surface or briefly centrifuging the vial in a tabletop centrifuge to dislodge any liquid in the container's cap.

## APPLICATIONS:

Western Blot	Tested
ELISA, ICC, IHC	Not Tested

## TESTING: (secondary reagents and protocols)

**Western Blot:** E coli-derived fusion protein as test antigen. Affinity-purified IgY dilution: 1:2000, Goat anti-IgY-HRP dilution: 1:1000. Colorimetric method for signal development.



## TARGET DESCRIPTION:

**FUNCTION:** May play a role in ubiquitination and subsequent proteosomal degradation of target proteins.

**SUBUNIT:** Probably associates with SCF (SKP1-CUL1-F-box protein) complex through interaction with SKP1. Interacts with S100A6.

**SIMILARITY:** Contains 3 TPR repeats.

OMIM: 604098; gene. [NCBI / EBI]

## CATEGORIES RELATED TO TARGET PROTEIN:

**PROTEIN FUNCTIONS:** Membrane Glycoproteins

## BACKGROUND REFERENCES:

- [1] Zou,X., et al. [Molecular cloning and characterization o...](#)
- [2] Niikura,Y. and Kitagawa,K. [Identification of a novel splice variant...](#)
- [3] Nowotny,M., et al. [Calcium-regulated interaction of Sgt1 wi...](#)
- [4] Kitagawa,K., et al. [SGT1 encodes an essential component of t...](#)

Copyright: This GenWay TDS is copyrighted. It is produced based partially on data from [Swiss-Prot/TrEMBL](#) and [NCBI](#).

Disclaimer: For documents and software available from this server, GenWay neither warrants nor assumes any legal liability or responsibility for the accuracy, completeness or utility of any information, product or process disclosed.