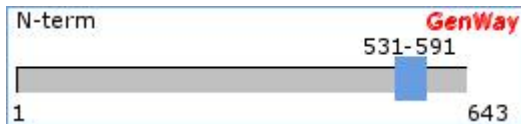


# Myotubularin-related protein 2, Antibody

EC 3.1.3.-



<b>Catalog Number:</b> 15-288-21545	
SwissProt Accession #: Q13614	MTMR2_HUMAN
NCBI Accession #: NP_057240.3	GI #: 44680154
Immunogen Sequence Position: 531-591	Length (aa): 643
Mol. Weight (Da): 73354	



Linear Protein Map with Immunogenic Epitope Marked (sequence source from above GI#)

**Source:** Chicken

**Purity:** Immunoaffinity Purified

**Clonality:** Polyclonal

**Crossreactivity:** Human

**Format:** Phosphate-Buffered Saline. No preservatives added.

**Storage:** 4°C for short term (weeks) and -20°C for long term. Avoid frequent freeze and thaw.

**Stability:** 6-12 months at -20°C.

**Shipping:** Products may be shipped on ice pack.

**Precautions:** This product is for *in vitro* research use only. Not for use in diagnostic or therapeutic procedures.

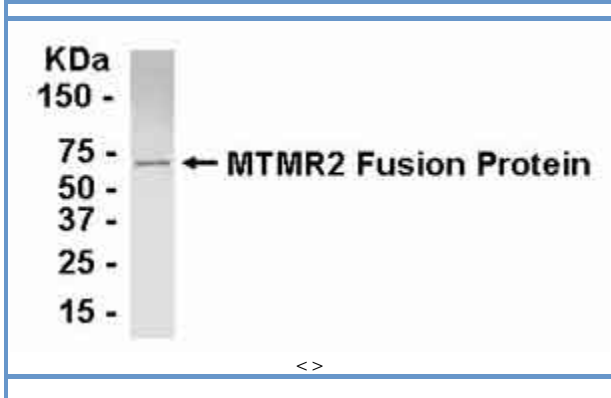
**Important Notes:** During shipment, small volumes of product will occasionally become entrapped in the seal of the product vial. For products with volumes of 200 µL or less, we recommend gently tapping the vial on a hard surface or briefly centrifuging the vial in a tabletop centrifuge to dislodge any liquid in the container's cap.

## APPLICATIONS:

Western Blot	Tested
ELISA, ICC, IHC	Not Tested

## TESTING: (secondary reagents and protocols)

**Western Blot:** E coli-derived fusion protein as test antigen. Affinity-purified IgY dilution: 1:2000, Goat anti-IgY-HRP dilution: 1:1000. Colorimetric method for signal development.



## TARGET DESCRIPTION:

**FUNCTION:** Not known, could be a tyrosine-phosphatase.  
**DISEASE:** Defects in MTMR2 are the cause of Charcot-Marie-Tooth disease type 4B (CMT4B) [MIM: 601382]. CMT4B is an autosomal recessive demyelinating neuropathy with myelin outfoldings.

**SIMILARITY:** Contains 1 tyrosine-protein phosphatase domain.

**DATABASE:** NAME=Inherited peripheral neuropathies mutation db;

WWW="http://www.molgen.ua.ac.be/CMTMutations/"

OMIM: 603557; gene. [NCBI / EBI]  
601382; phenotype. [NCBI / EBI]

## CATEGORIES RELATED TO TARGET PROTEIN:

**TISSUES:** Peripheral Nerve, Myelin, Chromosomes, Intracellular, Plasma Membrane, Neuron, Fibroblast, Glial Cell, Schwann Cell, Phospholipids, Sciatic Nerve, Cytoplasm, Oligodendrocyte, Tumor Cells

**PROTEIN FUNCTIONS:** Protein Biosynthesis, Tyrosine Metabolism, Phosphotransferases

**DISEASES:** Syndrome X, Neoplasm

## BACKGROUND REFERENCES:

- [1] Robinson, F.L. and Dixon, J.E. The phosphoinositide-3-phosphatase MTMR2...
- [2] Begley, M.J., et al. Crystal structure of a phosphoinositide ...
- [3] Previtali, S.C., et al. Myotubularin-related 2 protein phosphatase...
- [4] Kim, S.A., et al. Regulation of myotubularin-related (MTMR)...
- [5] Nelis, E., et al. A novel homozygous missense mutation in ...

Copyright: This GenWay TDS is copyrighted. It is produced based partially on data from Swiss-Prot/TrEMBL and NCBI.

Disclaimer: For documents and software available from this server, GenWay neither warrants nor assumes any legal liability or responsibility for the accuracy, completeness or utility of any information, product or process disclosed.