

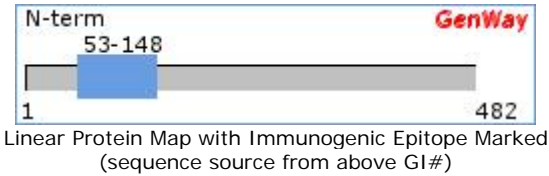
Amyotrophic lateral sclerosis 2 chromosomal region candidate gene 15 protein, Antibody



Catalog Number: 15-288-21292	
SwissProt Accession #: Q8NDH6	AL2SE_HUMAN
NCBI Accession #: NP_612477.3	GI #: 22095388
Immunogen Sequence Position: 53-148	Length (aa): 482
Mol. Weight (Da): 54407	

TARGET DESCRIPTION:
Ica69-related protein.
OMIM: N/A

BACKGROUND REFERENCES:
[1] Hadano,S., et al. A gene encoding a putative GTPase regula...



Copyright: This GenWay TDS is copyrighted. It is produced based partially on data from [Swiss-Prot/TrEMBL](#) and [NCBI](#).

Disclaimer: For documents and software available from this server, GenWay neither warrants nor assumes any legal liability or responsibility for the accuracy, completeness or utility of any information, product or process disclosed.

- Source:** Chicken
- Purity:** Immunoaffinity Purified
- Clonality:** Polyclonal
- Crossreactivity:** Human
- Format:** Phosphate-Buffered Saline. No preservatives added.
- Storage:** 4°C for short term (weeks) and -20°C for long term. Avoid frequent freeze and thaw.
- Stability:** 6-12 months at -20°C.
- Shipping:** Products may be shipped on ice pack.
- Precautions:** This product is for *in vitro* research use only. Not for use in diagnostic or therapeutic procedures.
- Important Notes:** During shipment, small volumes of product will occasionally become entrapped in the seal of the product vial. For products with volumes of 200 µL or less, we recommend gently tapping the vial on a hard surface or briefly centrifuging the vial in a tabletop centrifuge to dislodge any liquid in the container's cap.

APPLICATIONS:	
Western Blot	Tested
ELISA, ICC, IHC	Not Tested

TESTING: (secondary reagents and protocols)
Western Blot: E coli-derived fusion protein as test antigen. Affinity-purified IgY dilution: 1:2000, Goat anti-IgY-HRP dilution: 1:1000. Colorimetric method for signal development.

