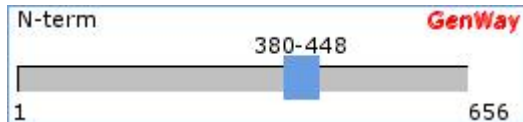


EWSR1 protein, Antibody



Catalog Number: 15-288-21286A	
SwissProt Accession #:	Q9BWA2 Q9BWA2_HUMAN
NCBI Accession #:	NP_005234.1 GI #: 4885225
Immunogen Sequence Position:	Length (aa): 656
380-448	
Mol. Weight (Da):	37620



Linear Protein Map with Immunogenic Epitope Marked (sequence source from above GI#)

Source: Chicken

Purity: Immunoaffinity Purified

Clonality: Polyclonal

Crossreactivity: Human, mouse, rat (Based on protein sequence homology)

Format: Phosphate-Buffered Saline. No preservatives added.

Storage: 4°C for short term (weeks) and -20°C for long term. Avoid frequent freeze and thaw.

Stability: 6-12 months at -20°C.

Shipping: Products may be shipped on ice pack.

Precautions: This product is for *in vitro* research use only. Not for use in diagnostic or therapeutic procedures.

Important Notes: During shipment, small volumes of product will occasionally become entrapped in the seal of the product vial. For products with volumes of 200 µL or less, we recommend gently tapping the vial on a hard surface or briefly centrifuging the vial in a tabletop centrifuge to dislodge any liquid in the container's cap.

APPLICATIONS:	
Western Blot	Tested
ELISA, ICC, IHC	Not Tested

TESTING: (secondary reagents and protocols)

Western Blot: E coli-derived fusion protein as test antigen. Affinity-purified IgY dilution: 1:2000, Goat anti-IgY-HRP dilution: 1:1000. Colorimetric method for signal development.

TARGET DESCRIPTION:

This protein is a putative RNA binding protein of unknown function. Mutations in this gene, specifically a t(11;22)(q24;q12) translocation, are known to cause Ewing sarcoma as well as neuroectodermal and various other tumors. Alternative splicing of this gene results in two products.

OMIM: NCBI [133450]

CATEGORIES RELATED TO TARGET PROTEIN:

TISSUES: Osteosarcoma, Nuclear Chromosome, Chromosomes, Fibroblast, Ribonucleoprotein Complex, Nucleus, Transcription Factor Complex, Cytoplasm, Intracellular, Melanoma, Chondrosarcoma, Chromatin, Lung Cancer, Thyroid, Bone Marrow, Mesenchymal, Neuroblastoma, Lymphocytes, Rna Polymerase Complex, Serum

more... Neuron, Leukocyte, Cell Surface, Peripheral Blood, Rhabdomyosarcoma, Plasma Membrane, Rough ER, Rough Endoplasmic Reticulum, Prostate, Hematopoietic, Intermediate Filaments, Microtubules, T-Cell, Fibrosarcoma, Brain Tumor, Adipocyte, Embryonic Fibroblast, Blood Cells

PROTEIN FUNCTIONS: Oncogene Proteins, Viral Regulatory Proteins, Neuroectodermal Tumors, Neoplasms, Neuroepithelial, Tumor Suppressor Proteins, Phosphotransferases, Rna Polymerase, Transcription Factors, General, Cell Division, Receptors, Steroid, Oncogene Proteins, Viral, Antigens, Neoplasm, Membrane Glycoproteins, Calcium-Binding Proteins, Interphase, Translation Factors, Tyrosine Metabolism, Tumor Markers, Biological, Ion Channels, Glutathione Metabolism

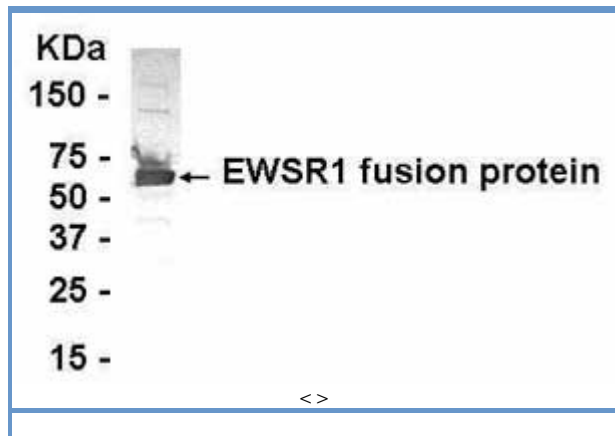
more... Dna Polymerase, Luciferases, Homeodomain Proteins, Immunoglobulins, Retroviridae Proteins, Serum Globulins, One-Carbon Group Transferases, Telomere-Binding Proteins, Receptors, Peptide, Antigens, Differentiation, Cell Adhesion Molecules (Cams), Cd Molecules, Acid Anhydride Hydrolases, Focal Adhesion, Alkyl And Aryl Transferases, Muscle Proteins, Antigens, Surface, Chromosomal Proteins, Non-Histone, Ligases, Gtp-Binding Proteins

DISEASES: Benign Tumor, Ewing's Sarcoma, Germ Cell Tumors, Bone Diseases, Leukemia, Chondrosarcoma, Adenocarcinoma, Small Cell Lung Cancer, Lung Diseases, Lung Tumor, Myelogenous Leukemia, Lymphadenopathy, Wilms' Tumor, Adenovirus, Metastasis, Myelodysplasia, Neck Cancer, Blood Diseases, Brain Tumor, Breast Cancer

more... Fibrosarcoma, Escherichia Coli, Neurodegenerative

BACKGROUND REFERENCES:

- [1] Hallor, K.H., et al. Fusion of the EWSR1 and ATF1 genes witho...
- [2] Nozawa, S., et al. Inhibition of platelet-derived growth fa...
- [3] Lee, J., et al. Stimulation of Oct-4 activity by Ewing's...
- [4] Prieur, A., et al. EWS/FLI-1 silencing and gene profiling o...
- [5] Gascoyne, D.M., Thomas, G.R. and Latchman, D.S. The effects of Brn-3a on neuronal differ...



Copyright: This GenWay TDS is copyrighted. It is produced based partially on data from [Swiss-Prot/TrEMBL](#) and [NCBI](#).

Disclaimer: For documents and software available from this server, GenWay neither warrants nor assumes any legal liability or responsibility for the accuracy, completeness or utility of any information, product or process disclosed.

GenWay Biotech, Inc. 6777 Nancy Ridge Drive, San Diego, CA 92121
Tel: [\(858\)458-0866](tel:(858)458-0866) Fax: [\(858\)458-0833](tel:(858)458-0833) Email: sales@genwaybio.com
©1998 - 2006 GenWay Biotech, Inc. - All Rights Reserved