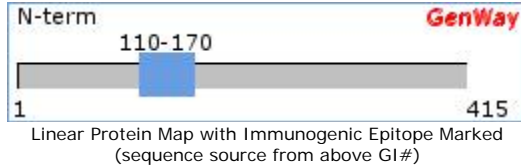


Hypothetical protein FLJ22626, Antibody



Catalog Number: 15-288-21230	
SwissProt Accession #: Q9H638	Q9H638_HUMAN
NCBI Accession #: NP_078804.1	GI #: 13375676
Immunogen Sequence Position: 110-170	Length (aa): 415
Mol. Weight (Da): 47108	



Source: Chicken

Purity: Immunoaffinity Purified

Clonality: Polyclonal

Crossreactivity: Human

Format: Phosphate-Buffered Saline. No preservatives added.

Storage: 4°C for short term (weeks) and -20°C for long term.
Avoid frequent freeze and thaw.

Stability: 6-12 months at -20°C.

Shipping: Products may be shipped on ice pack.

Precautions: This product is for *in vitro* research use only. Not for use in diagnostic or therapeutic procedures.

Important Notes: During shipment, small volumes of product will occasionally become entrapped in the seal of the product vial. For products with volumes of 200 µL or less, we recommend gently tapping the vial on a hard surface or briefly centrifuging the vial in a tabletop centrifuge to dislodge any liquid in the container's cap.

APPLICATIONS:	
Western Blot	Tested
ELISA, ICC, IHC	Not Tested

TESTING: (secondary reagents and protocols)
Not Available

TARGET DESCRIPTION:
Gene type: protein coding
Gene description: NF-kappaB activating protein
RefSeq status: Provisional
Organism: <i>Homo sapiens</i>
OMIM: N/A

BACKGROUND REFERENCES:
[1] Beausoleil,S.A., et al. Large-scale characterization of HeLa cel...
[2] Beausoleil,S.A., et al. Large-scale characterization of HeLa cel...
[3] Ghiorzo,P., et al. Inverse correlation between p16INK4A exp...
[4] Chen,D., et al. Identification of a nuclear protein that...

Copyright: This GenWay TDS is copyrighted. It is produced based partially on data from [Swiss-Prot/TrEMBL](#) and [NCBI](#).

Disclaimer: For documents and software available from this server, GenWay neither warrants nor assumes any legal liability or responsibility for the accuracy, completeness or utility of any information, product or process disclosed.