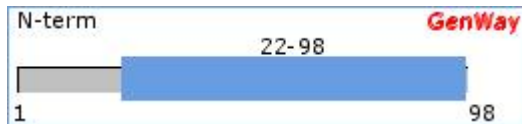


Small inducible cytokine B10, Antibody



CXCL10, 10 kDa interferon-gamma-induced protein, Gamma-IP10, IP-10

Catalog Number: 15-288-21037	
SwissProt Accession #: P02778	SCYBA_HUMAN
NCBI Accession #: NP_001556.1	GI #: 4504701
Immunogen Sequence Position: 22-98	Length (aa): 98
Mol. Weight (Da): 10881	



Linear Protein Map with Immunogenic Epitope Marked (sequence source from above GI#)

Source: Chicken

Purity: Immunoaffinity Purified

Clonality: Polyclonal

Crossreactivity: Human

Format: Phosphate-Buffered Saline. No preservatives added.

Storage: 4°C for short term (weeks) and -20°C for long term. Avoid frequent freeze and thaw.

Stability: 6-12 months at -20°C.

Shipping: Products may be shipped on ice pack.

Precautions: This product is for *in vitro* research use only. Not for use in diagnostic or therapeutic procedures.

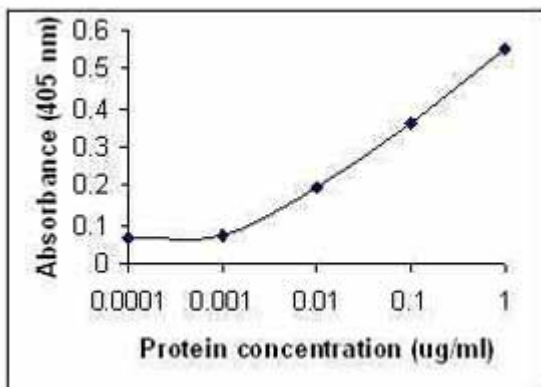
Important Notes: During shipment, small volumes of product will occasionally become entrapped in the seal of the product vial. For products with volumes of 200 µL or less, we recommend gently tapping the vial on a hard surface or briefly centrifuging the vial in a tabletop centrifuge to dislodge any liquid in the container's cap.

APPLICATIONS:

ELISA, Western Blot	Tested
ICC, IHC	Not Tested

TESTING: (secondary reagents and protocols)

ELISA: Recombinant protein as test antigen. Rabbit anti-IP-10 IgG (2µg/ml) as capture antibody, Affinity-Purified anti-IP-10 IgY as detection antibody



<>

TARGET DESCRIPTION:

FUNCTION: Chemotactic for monocytes and T lymphocytes. Binds to CXCR3.

PTM: CXCL10(1-73) is produced by proteolytic cleavage after secretion from keratinocytes.

SIMILARITY: Belongs to the [intercrine alpha \(chemokine Cx\) family](#).

SUBCELLULAR LOCATION: Secreted protein.

INDUCTION: By interferon gamma. A diverse population of cell types rapidly increases transcription of mRNA encoding this protein. This suggests that gamma-induced protein may be a key mediator of the interferon gamma response.

OMIM: 147310; gene. [NCBI / EBI]

CATEGORIES RELATED TO TARGET PROTEIN:

TISSUES: Blood Cells, Lymphocytes, T-Cell, Macrophage, Tumor Cells, Monocytes, Serum, Blood Vessels, Cell Surface, Granulocyte, Peripheral Blood, Capillary Endothelium, Neutrophils, Intracellular, Keratinocytes, Lungs, Glial Cell, Fibroblast, Astrocytes, Dendritic Cell

more... Peripheral Blood Lymphocytes, Natural Killer Cells, Spleen, Lymphoid, Peripheral Blood T-Cell, Lymphoma, Lung Macrophage, Lymph Node, Microglia, Platelet, Thymus, Plasma, Urinary Tract, B-Cell, Cerebrospinal Fluid, Peritoneal Macrophage, Mucosa, Heart, Gastrointestinal Tract, Vein, Epidermis, Bone Marrow, Intestine, Neuron, Epidermal Keratinocytes, Cytoplasm, Pancreas, Pancreatic Islets, Hematopoietic, Melanoma, Hepatocytes, Plasma Membrane, Eosinophil, Colon, Cytotoxic T-Cell, Extracellular Matrix, Lung Cancer, Stromal Cells, Smooth Muscle, Umbilical Vein, Artery, Squamous, Eye, Hematopoietic Stem Cells, Nucleus, Myelin, Lung Fibroblast, Umbilical Vein Endothelial Cells, Extracellular Fluid, Lung Epithelial Cells, Squamous Cell Carcinoma, Mesangial Cells, Mammary Tumor, Transcription Factor Complex, Vascular Endothelial Cells, Alveolar Macrophage, Bone Marrow Macrophage, B-Cell Lymphoma, Intestinal Mucosa, Peritoneal Cavity, Intestinal Epithelium, Granuloma, Mast Cells, Plasmacytoid Dendritic Cell, Spinal Cord, Mammary Cancer, T-Cell Lymphoma, Soleus Muscle, Skeletal Muscle, Thyroid

PROTEIN FUNCTIONS: Protein Biosynthesis, Cytokines, Receptors, Immunologic, Receptors, Cytokine, Cytokine Receptors, Receptors, G-Protein-Coupled, G-Protein Coupled Receptors, Interleukins, Antigens, Surface, Chemotaxis, Tumor Necrosis Factors, Antigens, Differentiation, Serum Globulins, Immunoglobulins, Membrane Glycoproteins, Phosphotransferases, Cell Division, Adaptor Proteins, Signal Transducing, Phosphatidylinositolg Signaling System, Blood Coagulation Factors

more... Cell Adhesion Molecules (Cams), Lipopolysaccharide Biosynthesis, Oncogene Proteins, Viral Regulatory Proteins, Peptide Hydrolases, Esterases, Hematopoietic Cell Growth Factors, Colony-Stimulating Factors, Neuroectodermal Tumors, Tyrosine Metabolism, Integrins, Receptors, Peptide, Angiogenic Proteins, Mitogen-Activated Protein Kinases, Fatty Acid Metabolism, Second Messenger Systems, Insulin, Glycosaminoglycan Degradation, Calcium Signaling Pathway, Pyrimidine Metabolism, Peptide Hormones, Biosynthesis Of Steroids, Acid Anhydride Hydrolases, Cysteine Metabolism, Serpins, Gtp-Binding Proteins, Map Kinase Signaling System, Type Ii Secretion System, Glutamate Metabolism, Nucleotide Sugars Metabolism, Fatty Acid Biosynthesis, Retroviridae Proteins, Neoplasms, Neuroepithelial, Acute-Phase Proteins, Gastrointestinal Hormones, Toll-Like Receptor Signaling Pathway, Terpenoid Biosynthesis, Bacterial Toxins, C21-Steroid

Hormone Metabolism, Oncogene Proteins, Viral, Hypothalamic Hormones, Tumor Markers, Biological, Cd Molecules, Bacterial Chemotaxis, Glycosphingolipid Metabolism, Glycosyltransferases, Transcription Factor Ap-1, Pancreatic Hormones, Lipoproteins, Ldl, Chondroitin, Retinol Metabolism, Phenylalanine Metabolism, Peptidoglycan Biosynthesis, Inositol Metabolism, Antigens, Neoplasm, Translation Factors, Tumor Suppressor Proteins, Insulin Signaling Pathway, Jak-Stat Signaling Pathway, Luciferases, Interphase, Microfilament Proteins, Muscle Proteins, Neurotoxins, Nitrogen Metabolism

DISEASES: Benign Tumor, Viral Diseases, Fungi, Autoimmune Disease, Lung Diseases, Herpesviruses, Lymphadenopathy, Allergy, Multiple Sclerosis, Lymphoma, Hepatitis, Adenovirus, Eye Diseases, Encephalomyelitis, Germ Cell Tumors, Human Immunodeficiency Virus, Encephalitis, Diabetes Mellitus, Arthritis, Metabolic Diseases

more... Adenocarcinoma, Dementia, Connective Tissue Diseases, Immunosuppression, AIDS, Type 1 Diabetes Mellitus, Insulin Dependent Diabetes Mellitus, Lung Cancer, Skin Cancer, Joint Diseases, Mental Disorders, Lung Tumor, Herpes Simplex Virus, Breast Cancer, Immune Deficiency, Hepatitis Virus, Leukemia, Pneumonia, Atopic Dermatitis, Metastasis, Chronic Hepatitis, Epidermoid Carcinoma, Asthma, Pertussis, Pregnancy, Respiratory Viruses, Blood Diseases, Rheumatic Diseases, Squamous Cell Carcinoma, Mycobacterium, Type 2 Diabetes, Cirrhosis, Burkitt's Lymphoma, Coronavirus, Colorectal Tumor, Colorectal Cancer, Leishmania, Mycosis, Kaposi's Sarcoma, Breast Tumor, Meningitis, Breast Carcinoma, Arteriosclerosis, Hepatitis C Virus, Neurodegenerative, Helicobacter Pylori Infection, Astrocytoma, Heart Disease, Encephalopathy, Retinopathy, Ischaemic Heart Disease, Gliomas, Graves' Disease, Hemorrhagic, Myelogenous Leukemia, Alzheimer's Disease, Alzheimer's Disease, Marburg, Lupus, Bladder Cancer, Escherichia Coli, Colitis, Cutaneous Leishmaniasis, Staphylococcus, Endocrine, Acute Hepatitis, Coronary Heart Disease, Influenza A, Hodgkin's Lymphoma, Hodgkin's Disease

BACKGROUND REFERENCES:

- [1] Kouroumalis,A., et al. The chemokines CXCL9, CXCL10, and CXCL11...
- [2] Fall,N., et al. Association between lack of angiogenic r...
- [3] Antonelli,A., et al. Age-dependent changes in CXC chemokine I...
- [4] Zhang,H.M., et al. Gamma interferon-inducible protein 10 in...
- [5] Ying,S., et al. Thymic stromal lymphopoietin expression ...

Copyright: This GenWay TDS is copyrighted. It is produced based partially on data from [Swiss-Prot/TrEMBL](#) and [NCBI](#).

Disclaimer: For documents and software available from this server, GenWay neither warrants nor assumes any legal liability or responsibility for the accuracy, completeness or utility of any information, product or process disclosed.