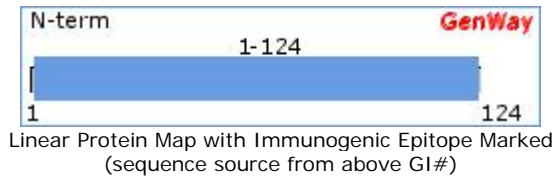


# Cholera enterotoxin subunit B, Antibody



Cholera enterotoxin B chain, Cholera enterotoxin gamma chain, Cholera toxin B subunit

<b>Catalog Number:</b> 15-288-10841F	
SwissProt Accession #: P01556	CHTB_VIBCH
NCBI Accession #: CAA53976.1	GI #: 433861
Immunogen Sequence Position: 1-124	Length (aa): 124
Mol. Weight (Da): 13957	



**Source:** Chicken

**Purity:** Immunoaffinity Purified

**Clonality:** Polyclonal

**Crossreactivity:** Bacteria (Based on protein sequence homology)

**Format:** Phosphate-Buffered Saline. No preservatives added.

**Storage:** 4°C for short term (weeks) and -20°C for long term. Avoid frequent freeze and thaw.

**Stability:** 6-12 months at -20°C.

**Shipping:** Products may be shipped on ice pack.

**Precautions:** This product is for *in vitro* research use only. Not for use in diagnostic or therapeutic procedures.

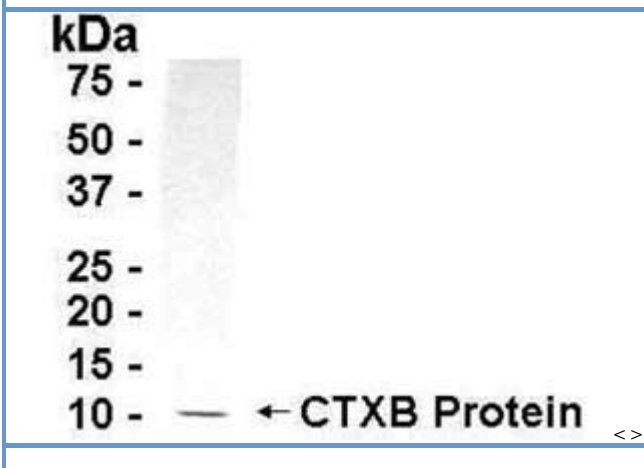
**Important Notes:** During shipment, small volumes of product will occasionally become entrapped in the seal of the product vial. For products with volumes of 200 µL or less, we recommend gently tapping the vial on a hard surface or briefly centrifuging the vial in a tabletop centrifuge to dislodge any liquid in the container's cap.

## APPLICATIONS:

Western Blot	Tested
ELISA, ICC, IHC	Not Tested

## TESTING: (secondary reagents and protocols)

**Western Blot:** CTXB protein as test antigen. Affinity-purified IgY dilution: 1:2000, Goat anti-IgY-HRP dilution: 1:1000. Colorimetric method for signal development.



## TARGET DESCRIPTION:

**FUNCTION:** The B subunit pentameric ring directs the A subunit to its target by binding to the GM1 gangliosides present on the surface of the intestinal epithelial cells. It can bind five GM1 gangliosides. It has no toxic activity by itself.  
**SUBUNIT:** The holotoxin (cholera toxin) consists of a pentameric ring of B subunits whose central pore is occupied by the A subunit. The A subunit contains two chains, A1 and A2, linked by a disulfide bridge.

OMIM: N/A

## CATEGORIES RELATED TO TARGET PROTEIN:

**TISSUES:** Intracellular, Plasma Membrane, Gastrointestinal Tract, Intestine, Tumor Cells, Serum, Neuron, Blood Cells, Cell Surface, Leukocyte, Mucosa, Lymphocytes, Nucleus, Forebrain, Small Intestine, Anterior Pituitary, T-Cell, Intestinal Mucosa, Intestinal Epithelium, Cytoplasm

more... Brain Stem, Diencephalon, Peripheral Nerve, Fibroblast, Spinal Cord, Hypothalamus, Axons, Telencephalon, Ovary, Phospholipids, Gonad, Hindbrain, Eye, Monocytes, Dendrites, Spleen, Macrophage, Brain Cortex, B-Cell, Blood Vessels, Forebrain Cortex, Heart, Jejunum, Smooth Muscle, Ileum, Midbrain, Urinary Tract, Synapse, Erythrocyte, Retina, Medulla Oblongata, Thyroid, Platelet, Cervical, Granulocyte, Lymphoid, Lymphoma, Lungs, Thalamus, Nerve Endings, Adrenal Gland, Ovarian Follicle, Peripheral Blood, Nerve Cord, Gastrocnemius, Soleus Muscle, Skeletal Muscle, Testis, Erythroid Cells, Artery, Neuroblastoma, Neutrophils, Glial Cell, Myocardium, Adipose Tissue, Heart Muscle, Fetal Serum, Colon, Cardiac Muscle, White Adipose Tissue, Cytoskeleton, Nose, Lymph Node, Gamete, Endoplasmic Reticulum, Peyer's Patch, Melanocyte, Saliva, Pancreas, Vascular Smooth Muscle

**PROTEIN FUNCTIONS:** Bacterial Toxins, Glycosyltransferases, Acid Anhydride Hydrolases, Gtp-Binding Proteins, Serum Globulins, Immunoglobulins, Peptide Hormones, G-Protein Coupled Receptors, Receptors, G-Protein-Coupled, Nucleotide Sugars Metabolism, Phosphotransferases, Cytokines, Fatty Acid Metabolism, Pituitary Hormones, Blood Coagulation Factors, Cell Division, Glycosphingolipid Metabolism, Receptors, Peptide, Membrane Glycoproteins, Esterases

more... Purine Metabolism, Insulin, Terpenoid Biosynthesis, Gonadotropins, Antigens, Surface, Receptors, Immunologic, Gastrointestinal Hormones, Pancreatic Hormones, Interleukins, Peptide Hydrolases, Biosynthesis Of Steroids, C21-Steroid Hormone Metabolism, Tyrosine Metabolism, Ion Channels, Inositol Metabolism, Fatty Acid Biosynthesis, Antigens, Differentiation, Neuroectodermal Tumors, Hypothalamic Hormones, Phosphatidylinositol Signaling System, Inositol Phosphate Metabolism, Neoplasms, Neuroepithelial, Placental Hormones, Monomeric Gtp-Binding Proteins, Oncogene Proteins, Second Messenger Systems, Ganglioside Biosynthesis, Lipopolysaccharide Biosynthesis, Calcium-Binding Proteins, Glutamate Metabolism, Tumor Necrosis Factors, Serpins, Synaptic Transmission, Phenylalanine Metabolism, Cytokine Receptors, Receptors, Cytokine, Muscle Proteins, Neurotoxins, Retinol Metabolism, Mitogen-Activated Protein Kinases, Hematopoietic Cell Growth Factors, Mycotoxins, Galactose Metabolism, Cell Adhesion Molecules (Cams), Acute-Phase Proteins, Proto-Oncogene Proteins C-Fos, Microfilament Proteins, Chemotaxis, Colony-Stimulating Factors, Lysine Degradation, Chemokines, Receptors, Steroid, Biotin Metabolism, Alkaloid Biosynthesis I, Retroviridae Proteins, Tumor Markers, Biological, Angiogenic

Proteins, Adaptor Proteins, Signal Transducing, Alcohol Oxidoreductases, Microtubule Proteins, Translation Factors, Pyrimidine Metabolism, Cysteine Metabolism, Insulin Signaling Pathway, Antigens, Neoplasm, Integrins, Corticotropin-Releasing Hormone, Tight Junction, Viral Regulatory Proteins, Interphase

**DISEASES:** Pertussis, Neoplasm, Benign Tumor, Escherichia Coli, Fungi, Diarrhea, Germ Cell Tumors, Lymphoma, Pregnancy, Immunosuppression, Salmonella, Lymphadenopathy, Leukemia, Viral Diseases, Gliomas, Streptococcus, Autoimmune Disease, Allergy, Metabolic Diseases, Influenza A

more... Adenocarcinoma, Endocrine, Salmonella Typhimurium, Staphylococcus, Myelogenous Leukemia, Pseudomonas, Human Immunodeficiency Virus, Depression, Brain Tumor, Helicobacter Pylori Infection, Adrenal Tumor, Eye Diseases, Pituitary Tumor, Lung Diseases, Shigella, Herpesviruses, Campylobacter, Diabetes Mellitus, Pituitary Adenoma, Respiratory Viruses, Breast Cancer, Bone Diseases, Heart Disease, Oedema, Blood Diseases, Breast Tumor, Liver Cancer, Mental Disorders, Colorectal Cancer, AIDS, Colorectal Tumor, Cystic Fibrosis, High Blood Pressure, Hepatitis, Yersinia, Neck Cancer, Obesity, Astrocytoma, Colitis, Immune Deficiency, Type 1 Diabetes Mellitus, Insulin Dependent Diabetes Mellitus, Lung Cancer, Lung Tumor, Haemophilus Influenzae, Birth Defects, Herpes Simplex Virus, Epidermoid Carcinoma, Prostate Cancer, Sepsis, Schistosoma, Mycobacterium, Metastasis, Squamous Cell Carcinoma, Hypothyroid, Hypoxia, Thyroid Cancer, Clostridium Botulinum, Graves' Disease, Breast Carcinoma, Alzheimer's Disease, Alzheimer's Disease, Arthritis, Septicaemia, Asthma, Hemorrhagic, Toxoplasma, Plasmodium Falciparum, Toxoplasma Gondii, Type 2 Diabetes

#### BACKGROUND REFERENCES:

[1] Lebens,M. and Holmgren,J. [Structure and arrangement of the cholera...](#)

[2] Lebens,M. [Direct Submission...](#)

Copyright: This GenWay TDS is copyrighted. It is produced based partially on data from [Swiss-Prot/TrEMBL](#) and [NCBI](#).

Disclaimer: For documents and software available from this server, GenWay neither warrants nor assumes any legal liability or responsibility for the accuracy, completeness or utility of any information, product or process disclosed.