

Product Information

Contents: Phycoerythrin-Cy5 (PE-Cy5) anti-human CD38

Catalog Number: 15-0389

Sizes: 25 tests, 100 tests

Formulation: Phosphate buffer pH 7.2,
150 mM NaCl, 0.09% NaN₃, 0.2% BSA

Storage Conditions: Store at 4°C.

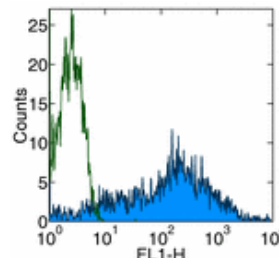
DO NOT FREEZE.

LIGHT-SENSITIVE MATERIAL.

Clone: HIT2

Isotype: Mouse IgG1, κ

HLDA No.: III 155



Surface staining of normal human peripheral blood cells with anti-human CD38 (HIT2) PE. Appropriate isotype controls were used (open histogram). Cells in the lymphocyte population were used for analysis.

Available Formats of This Product

Cat. No.	Format	Excite (nm)	Emit (nm)	Reported Applications
11-0389	FITC anti-human CD38	488	518	FC
12-0389	PE anti-human CD38	488	575	FC
14-0389	Affinity Purified anti-human CD38	N/A	N/A	FC IHC
15-0389	PE-Cy5 anti-human CD38	488	670	FC
17-0389	Allophycocyanin (APC) anti-human CD38	633	660	FC
25-0389	Coming Soon! - Phycoerythrin-Cy7 (PE-Cy7) anti-human CD38	488	760	FC
30-0389	Allophycocyanin-Cy5.5 (APC-Cy5.5) anti-human CD38	633	690	FC

Description

The HIT2 monoclonal antibody reacts with the human CD38 molecule, an approximately 45 kDa type II transmembrane protein. CD38 is expressed by thymocytes, peripheral B cells including plasma cells, activated T cells, and monocytes. CD38 is a counter-receptor for CD31 and has both cyclase and hydrolase enzymatic activity.

Usage

For research use only, not for diagnostic or therapeutic use. The HIT2 antibody has been reported for use in flow cytometric analysis.

Applications Tested

The HIT2 antibody has been pre-titrated and tested by flow cytometric analysis of human peripheral blood leukocytes. This can be used at 20 µl per 100 µl blood (or per 1 million cells in 100 µl total staining volume).

Related Products

- Cat. 11-0389 FITC anti-human CD38 (clone HIT2)
- Cat. 12-0389 PE anti-human CD38 (clone HIT2)
- Cat. 14-0389 Affinity Purified anti-human CD38 (clone HIT2)
- Cat. 15-4714 Phycoerythrin-Cy5 (PE-Cy5) Mouse IgG1, K Isotype Control

References

McMichael, A.J., P.C.L. Beverly, et al. eds. (1987). Leucocyte Typing III: White Cell Differentiation Antigens. Oxford University

Press. New York.

Joshua, D., A. Petersen, et al. (1996). "The labelling index of primitive plasma cells determines the clinical behaviour of patients with myelomatosis." Br J Haematol 94(1): 76-81.

Horenstein, A. L., H. Stockinger, et al. (1998). "CD38 binding to human myeloid cells is mediated by mouse and human CD31." Biochem J 330(Pt 3): 1129-35.

Deaglio, S., M. Morra, et al. (1998). "Human CD38 (ADP-ribosyl cyclase) is a counter-receptor of CD31, an Ig superfamily member." J Immunol 160(1): 395-402.

FOR NON-COMMERCIAL RESEARCH USE ONLY. NOT FOR THERAPEUTIC OR IN VIVO APPLICATIONS. OTHER USE NEEDS LICENSE FROM AMERSHAM PHARMACIA BIOTECH INC. UNDER U.S. PATENT Nos. 4,981,977 AND 5,268,486 AND OTHER PATENTS PENDING.

THIS MATERIAL IS SUBJECT TO PROPRIETARY RIGHTS OF AMERSHAM PHARMACIA BIOTECH INC. AND CARNEGIE MELLON UNIVERSITY AND MADE AND SOLD UNDER LICENSE FROM AMERSHAM PHARMACIA BIOTECH INC. THIS PRODUCT IS LICENSED FOR SALE ONLY FOR RESEARCH. IT IS NOT LICENSED FOR ANY OTHER USE. THERE IS NO IMPLIED LICENSE HEREUNDER FOR ANY COMMERCIAL USE. COMMERCIAL USE shall include:

1. Sale, lease, license or other transfer of the material or any material derived or produced from it.
2. Sale, lease, license or other grant of rights to use this material or any other material derived or produced from it
3. Use of this material to perform services for a fee for third parties.

IF YOU REQUIRE A COMMERCIAL LICENSE TO USE THIS MATERIAL AND DO NOT HAVE ONE, RETURN THIS MATERIAL, UNOPENED TO eBioscience AND ANY MONEY PAID FOR THE MATERIAL WILL BE REFUNDED.

Copyright © 2000-2005 eBioscience, Inc.
Product For Research Use Only: Not for further distribution without written consent.

