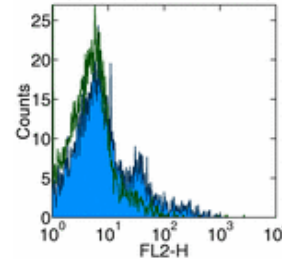


Product Information

Contents: Affinity Purified anti-human Ig light chain  $\lambda$   
Catalog Number: 14-9996  
Sizes: 25  $\mu$ g, 100  $\mu$ g  
Formulation: Phosphate buffer pH 7.2,  
150 mM NaCl, 0.09% NaN<sub>3</sub>  
Storage Conditions: Store at 4°C.  
Avoid repeated freeze/thaw cycles.  
Clone: JDC-12  
Isotype: Mouse IgG1,  $\kappa$



*Surface staining of normal human peripheral blood cells with anti-human IgL,  $\lambda$  (JDC-12) Purified followed by anti-mouse IgG Biotin and SA-PE. Appropriate isotype controls were used (open histogram). Cells in the lymphocyte population were used for analysis.*

Available Formats of This Product				
Cat. No.	Format	Excite (nm)	Emit (nm)	Reported Applications
13-9996	Biotin anti-human IgL, lambda	N/A	N/A	ELISA det FC IH/F
14-9996	Affinity Purified anti-human IgL, lambda	N/A	N/A	ELISA cap FC IH/F

Description

The JDC-12 monoclonal antibody reacts with the  $\lambda$  light chain of human immunoglobulin. It does not react with the  $\kappa$  light chain. Ig light chain is expressed as a membrane-bound form as well as soluble form.

Usage

For research use only, not for diagnostic or therapeutic use. The JDC-12 antibody has been reported for use in flow cytometric analysis, immunohistochemical staining of frozen tissue sections, and ELISA.

Applications Tested

The JDC-12 antibody has been tested by flow cytometric analysis of human peripheral blood leukocytes. This can be used at less than or equal to 1  $\mu$ g per 100  $\mu$ l blood (or per 1 million cells in 100  $\mu$ l total staining volume). It is recommended that the antibody be carefully titrated for optimal performance in the assay of interest.

Related Products

- Cat. 11-4011 FITC Anti-Mouse IgG
- Cat. 13-4013 Biotin Anti-Mouse IgG (clone Polyclonal)
- Cat. 11-4317 Streptavidin-FITC (Fluorescein isothiocyanate)
- Cat. 12-4317 Streptavidin-PE (Phycoerythrin)
- Cat. 17-4317 Streptavidin Allophycocyanin (SA-APC)
- Cat. 14-4714 Affinity Purified Mouse IgG1, K Isotype Control
- Cat. 13-9996 Biotin anti-human IgL, lambda (clone JDC-12)