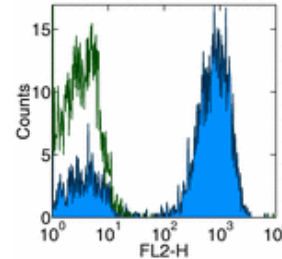


Product Information

Contents: Affinity Purified anti-human $\alpha\beta$ TcR
Catalog Number: 14-9986
Sizes: 25 μ g, 100 μ g
Formulation: Phosphate buffer pH 7.2,
150 mM NaCl, 0.09% NaN₃
Storage Conditions: Store at 4°C.
Avoid repeated freeze/thaw cycles.
Clone: IP26
Isotype: Mouse IgG1, κ



Surface staining of normal human peripheral blood cells with anti-human TCR alpha/beta (IP26) PE. Appropriate isotype controls were used (open histogram). Cells in the lymphocyte population were used for analysis.

Available Formats of This Product

Cat. No.	Format	Excite (nm)	Emit (nm)	Reported Applications
11-9986	FITC anti-human alpha beta TcR	488	518	FC
12-9986	PE anti-human alpha beta TcR	488	575	FC
13-9986	Biotin anti-human alpha beta TcR	N/A	N/A	FC
14-9986	Affinity Purified anti-human alpha beta TcR	N/A	N/A	FC
15-9986	PE-Cy5 anti-human alpha beta TcR	488	670	FC
17-9986	Allophycocyanin (APC) anti-human alpha beta TcR	633	660	FC

Description

The IP26 monoclonal antibody reacts with the α/β chain of human TCR. $\alpha\beta$ TCR is expressed by a majority of peripheral T cells.

Usage

For research use only, not for diagnostic or therapeutic use. The IP26 antibody has been reported for use in flow cytometric analysis.

Applications Tested

The IP26 antibody has been tested by flow cytometric analysis of human peripheral blood leukocytes. This can be used at less than or equal to 1 μ g per 100 μ l blood (or per 1 million cells in 100 μ l total staining volume). It is recommended that the antibody be carefully titrated for optimal performance in the assay of interest.

Related Products

Cat. 11-4011 FITC Anti-Mouse IgG
Cat. 13-4013 Biotin Anti-Mouse IgG (clone Polyclonal)
Cat. 11-4317 Streptavidin-FITC (Fluorescein isothiocyanate)
Cat. 12-4317 Streptavidin-PE (Phycoerythrin)
Cat. 17-4317 Streptavidin Allophycocyanin (SA-APC)
Cat. 14-4714 Affinity Purified Mouse IgG1, K Isotype Control
Cat. 11-9986 FITC anti-human alpha beta TcR (clone IP26)
Cat. 12-9986 PE anti-human alpha beta TcR (clone IP26)
Cat. 13-9986 Biotin anti-human alpha beta TcR (clone IP26)
Cat. 15-9986 PE-Cy5 anti-human alpha beta TcR (clone IP26)

