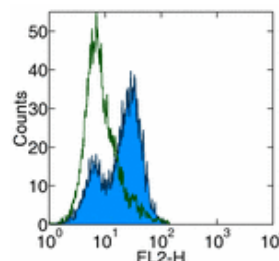


## Product Information

Contents: Affinity Purified anti-mouse IgE  
Catalog Number: 14-5992  
Sizes: 50 ug, 100 ug, 500 ug  
Formulation: Phosphate buffer pH 7.2,  
150 mM NaCl, 0.09% NaN<sub>3</sub>  
Storage Conditions: Store at 4°C.  
Avoid repeated freeze/thaw cycles.  
Clone: 23G3  
Isotype: Rat IgG1, κ



Surface staining of IGEL cells with anti-mouse IgE (23G3) PE. Appropriate isotype controls were used (open histogram). Total viable cells were used for analysis.

## Available Formats of This Product

Cat. No.	Format	Excite (nm)	Emit (nm)	Reported Applications
11-5992	FITC anti-mouse IgE	488	518	FC
12-5992	PE anti-mouse IgE	488	575	FC
13-5992	Biotin anti-mouse IgE	N/A	N/A	ELISA FC
14-5992	Affinity Purified anti-mouse IgE	N/A	N/A	ELISA FC

## Description

The 23G3 monoclonal antibody reacts with the ε heavy chain of mouse IgE. It does not react with other classes of mouse immunoglobulin including IgD, IgG, IgA, or IgM.

## Usage

For research use only, not for diagnostic or therapeutic use. The 23G3 antibody has been reported for use in flow cytometric analysis, and ELISA.

## Applications Tested

The 23G3 antibody has been tested by ELISA and can be used at 1:5000-1:10000. It is recommended that the antibody be carefully titrated for optimal performance in the assay of interest.

## Related Products

Cat. 14-4301 Affinity Purified Rat IgG1 Isotype Control  
Cat. 11-4317 Streptavidin-FITC (Fluorescein isothiocyanate)  
Cat. 12-4317 Streptavidin-PE (Phycoerythrin)  
Cat. 17-4317 Streptavidin Allophycocyanin (SA-APC)  
Cat. 11-4811 FITC Anti-Rat IgG  
Cat. 13-4813 Biotin Anti-Rat IgG (clone Polyclonal)  
Cat. 24-5093 Polyclonal anti-mouse IgD antiserum (activating) (clone Polyclonal)

## References

Keegan AD, Fratazzi C, Shopes B, Baird B, Conrad DH. 1991. Characterization of new rat anti-mouse IgE monoclonals and their use along with chimeric IgE to further define the site that interacts with Fc epsilon RII and Fc epsilon RI. Mol Immunol. 28(10):1149-54.

