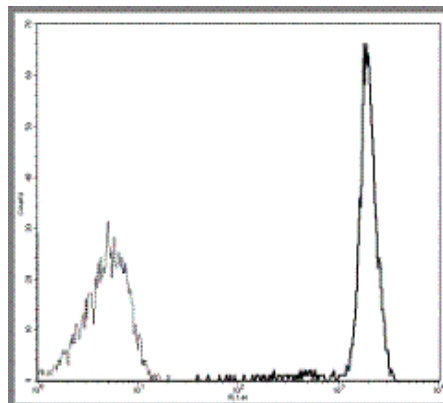


Product Information

Contents: Affinity Purified anti-human CD45 (LCA)
Catalog Number: 14-0459
Sizes: 25 ug, 100 ug
Formulation: Phosphate buffer pH 7.2,
150 mM NaCl, 0.09% NaN₃
Storage Conditions: Store at 4°C.
Avoid repeated freeze/thaw cycles.
Clone: HI30
Isotype: Mouse IgG1, κ
HLDA No.: IV N816



Profile of purified mAb HI30 (CD45) staining on human peripheral blood lymphocytes and detection with FITC anti-mouse IgG (cat.no. 11-4011)

Available Formats of This Product

Cat. No.	Format	Excite (nm)	Emit (nm)	Reported Applications
10-0459	Allophycocyanin-Cy7 (APC-Cy7) anti-human CD45 (LCA)	633	760	FC
11-0459	FITC anti-human CD45 (LCA)	488	518	FC
12-0459	PE anti-human CD45 (LCA)	488	575	FC
13-0459	Biotin anti-human CD45 (LCA)	N/A	N/A	FC
14-0459	Affinity Purified anti-human CD45 (LCA)	N/A	N/A	FC IHC
15-0459	PE-Cy5 anti-human CD45 (LCA)	488	670	FC
17-0459	Allophycocyanin (APC) anti-human CD45 (LCA)	633	660	FC
19-0459	Cy5 anti-human CD45 (LCA)	633	670	FC
25-0459	Phycoerythrin-Cy7 (PE-Cy7) anti-human CD45 (LCA)	488	760	FC
35-0459	Phycoerythrin-Cy5.5 (PE-Cy5.5) anti-human CD45 (LCA)	488	690	FC

Description

The HI30 monoclonal antibody reacts with all isoforms of human CD45, also known as Leukocyte Common Antigen (LCA). CD45 is expressed by all hematopoietic cells excluding circulating erythrocytes and platelets. The cytoplasmic portion of CD45 has tyrosine phosphatase enzymatic activity and plays an important role in activation of lymphocytes.

Usage

For research use only, not for diagnostic or therapeutic use. The HI30 antibody has been reported for use in flow cytometric analysis, and immunohistochemical staining.

Applications Tested

The HI30 antibody has been tested by flow cytometric analysis of human peripheral blood leukocytes. This can be used at less than or equal to 0.25 µg per 100 µl blood (or per 1 million cells in 100 µl total staining volume). It is recommended that the antibody be carefully titrated for optimal performance in the assay of interest.

Related Products

Cat. 10-0459 Allophycocyanin-Cy7 (APC-Cy7) anti-human CD45 (LCA) (clone HI30)
Cat. 11-0459 FITC anti-human CD45 (LCA) (clone HI30)
Cat. 12-0459 PE anti-human CD45 (LCA) (clone HI30)
Cat. 13-0459 Biotin anti-human CD45 (LCA) (clone HI30)
Cat. 15-0459 PE-Cy5 anti-human CD45 (LCA) (clone HI30)
Cat. 17-0459 Allophycocyanin (APC) anti-human CD45 (LCA) (clone HI30)
Cat. 25-0459 Phycoerythrin-Cy7 (PE-Cy7) anti-human CD45 (LCA) (clone HI30)
Cat. 11-4011 FITC Anti-Mouse IgG
Cat. 13-4013 Biotin Anti-Mouse IgG (clone Polyclonal)
Cat. 11-4317 Streptavidin-FITC (Fluorescein isothiocyanate)
Cat. 12-4317 Streptavidin-PE (Phycoerythrin)
Cat. 17-4317 Streptavidin Allophycocyanin (SA-APC)
Cat. 14-4714 Affinity Purified Mouse IgG1, K Isotype Control

References

Knapp, W., B. Dorken, et al. eds. (1989). Leucocyte Typing IV: White Cell Differentiation Antigens. Oxford University Press. New York.

Copyright © 2000-2005 eBioscience, Inc.
Product For Research Use Only: Not for further distribution without written consent.

