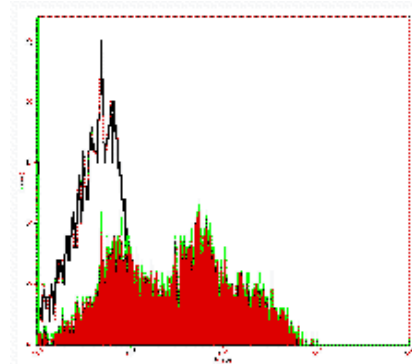


## Product Information

Contents: Affinity Purified anti-human CD38  
Catalog Number: 14-0389  
Sizes: 25 ug, 100 ug  
Formulation: Phosphate buffer pH 7.2,  
150 mM NaCl, 0.09% NaN<sub>3</sub>  
Storage Conditions: Store at 4°C.  
Avoid repeated freeze/thaw cycles.  
Clone: HIT2  
Isotype: Mouse IgG1, κ  
HLDA No.: III 155



*Profile of purified mAb HIT2 (CD38) staining human peripheral blood lymphocytes and detected with FITC anti-mouse IgG (cat.no. 11-4011)*

Available Formats of This Product				
Cat. No.	Format	Excite (nm)	Emit (nm)	Reported Applications
11-0389	FITC anti-human CD38	488	518	FC
12-0389	PE anti-human CD38	488	575	FC
14-0389	Affinity Purified anti-human CD38	N/A	N/A	FC IHC
15-0389	PE-Cy5 anti-human CD38	488	670	FC
17-0389	Allophycocyanin (APC) anti-human CD38	633	660	FC
25-0389	Coming Soon! - Phycoerythrin-Cy7 (PE-Cy7) anti-human CD38	488	760	FC
30-0389	Allophycocyanin-Cy5.5 (APC-Cy5.5) anti-human CD38	633	690	FC

## Description

The HIT2 monoclonal antibody reacts with the human CD38 molecule, an approximately 45 kDa type II transmembrane protein. CD38 is expressed by thymocytes, peripheral B cells including plasma cells, activated T cells, and monocytes. CD38 is a counter-receptor for CD31 and has both cyclase and hydrolase enzymatic activity.

## Usage

For research use only, not for diagnostic or therapeutic use. The HIT2 antibody has been reported for use in flow cytometric analysis, and immunohistochemical staining.

## Applications Tested

The HIT2 antibody has been tested by flow cytometric analysis of human peripheral blood leukocytes. This can be used at less than or equal to 1 µg per 100 µl blood (or per 1 million cells in 100 µl total staining volume). It is recommended that the antibody be carefully titrated for optimal performance in the assay of interest.

## Related Products

Cat. 11-0389 FITC anti-human CD38 (clone HIT2)  
Cat. 12-0389 PE anti-human CD38 (clone HIT2)  
Cat. 15-0389 PE-Cy5 anti-human CD38 (clone HIT2)  
Cat. 11-4011 FITC Anti-Mouse IgG  
Cat. 13-4013 Biotin Anti-Mouse IgG (clone Polyclonal)  
Cat. 11-4317 Streptavidin-FITC (Fluorescein isothiocyanate)

Cat. 12-4317 Streptavidin-PE (Phycoerythrin)  
Cat. 17-4317 Streptavidin Allophycocyanin (SA-APC)  
Cat. 14-4714 Affinity Purified Mouse IgG1, K Isotype Control

---

## References

---

McMichael, A.J., P.C.L. Beverly, et al. eds. (1987). *Leucocyte Typing III: White Cell Differentiation Antigens*. Oxford University Press. New York.

Joshua, D., A. Petersen, et al. (1996). "The labelling index of primitive plasma cells determines the clinical behaviour of patients with myelomatosis." *Br J Haematol* 94(1): 76-81.

Horenstein, A. L., H. Stockinger, et al. (1998). "CD38 binding to human myeloid cells is mediated by mouse and human CD31." *Biochem J* 330(Pt 3): 1129-35.

Deaglio, S., M. Morra, et al. (1998). "Human CD38 (ADP-ribosyl cyclase) is a counter-receptor of CD31, an Ig superfamily member." *J Immunol* 160(1): 395-402.

Copyright © 2000-2005 eBioscience, Inc.  
Product For Research Use Only: Not for further distribution without written consent.

