

Product Information

Contents: Affinity Purified anti-mouse CD18 (Integrin β_2)

Catalog Number: 14-0181

Sizes: 50 ug, 100 ug, 500 ug

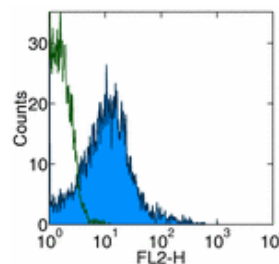
Formulation: Phosphate buffer pH 7.2,
150 mM NaCl, 0.09% NaN₃

Storage Conditions: Store at 4°C.

Avoid repeated freeze/thaw cycles.

Clone: M18/2

Isotype: Rat IgG2a, κ



Surface staining of mouse splenocytes with anti-mouse CD18 (M18/2) PE. Autofluorescence is shown via open histogram. Total viable cells were used for analysis.

Available Formats of This Product

Cat. No.	Format	Excite (nm)	Emit (nm)	Reported Applications
11-0181	FITC anti-mouse CD18 (Integrin beta 2)	488	518	FC
12-0181	PE anti-mouse CD18 (Integrin beta 2)	488	575	FC
13-0181	Biotin anti-mouse CD18 (Integrin beta 2)	N/A	N/A	FC
14-0181	Affinity Purified anti-mouse CD18 (Integrin beta 2)	N/A	N/A	FA FC IHC IP WB
16-0181	Functional Grade* Purified anti-mouse CD18 (Integrin beta 2)	N/A	N/A	FA FC

*Functional Grade™ (FG™): Azide-free, sterile-filtered, and endotoxin < 0.001 ng/μg.

Purified: Contains azide, not sterile-filtered, and not endotoxin tested.

Description

The M18/2 monoclonal antibody reacts with mouse CD18, the 90-95 kDa integrin β_2 glycoprotein. CD18 is the common β subunit that non-covalently associates with CD11a (α_L), CD11b (α_M) and CD11c (α_X) to form LFA-1, Mac-1 and gp150/95. Heterodimers of CD18 and the α subunits are expressed broadly by all leukocytes with NK and T cells showing higher density of surface expression. Through the interactions of LFA-1, Mac-1 and gp150/95 with their counter-receptors, CD18 is involved in cellular adhesion and the immune response.

Usage

For research use only, not for diagnostic or therapeutic use. The M18/2 antibody has been reported for use in flow cytometric analysis, immunoprecipitation, immunoblotting (WB), and immunohistochemical staining. It has also been reported in blocking of CD18 in functional studies. (Please use Functional Grade purified M18/2, cat. 16-0181, in functional assays.)

Applications Tested

The M18/2 antibody has been tested by flow cytometric analysis of mouse splenocyte and bone marrow cell suspensions. This can be used at less than or equal to 0.5 μ g per million cells in a 100 μ l total staining volume. It is recommended that the antibody be carefully titrated for optimal performance in the assay of interest.

Related Products

- Cat. 11-0181 FITC anti-mouse CD18 (Integrin beta 2) (clone M18/2)
- Cat. 12-0181 PE anti-mouse CD18 (Integrin beta 2) (clone M18/2)
- Cat. 13-0181 Biotin anti-mouse CD18 (Integrin beta 2) (clone M18/2)
- Cat. 16-0181 Functional Grade Purified anti-mouse CD18 (Integrin beta 2) (clone M18/2)
- Cat. 11-4317 Streptavidin-FITC (Fluorescein isothiocyanate)
- Cat. 12-4317 Streptavidin-PE (Phycoerythrin)
- Cat. 17-4317 Streptavidin Allophycocyanin (SA-APC)

Cat. 14-4321 Affinity Purified Rat IgG2a Isotype Control
Cat. 11-4811 FITC Anti-Rat IgG
Cat. 13-4813 Biotin Anti-Rat IgG (clone Polyclonal)

References

Sanchez-Madrid, F., P. Simon, et al. 1983. Mapping of antigenic and functional epitopes on the alpha- and beta-subunits of two related mouse glycoproteins involved in cell interactions, LFA-1 and Mac-1. *J Exp Med* 158(2): 586-602.

Copyright © 2000-2005 eBioscience, Inc.
Product For Research Use Only: Not for further distribution without written consent.

