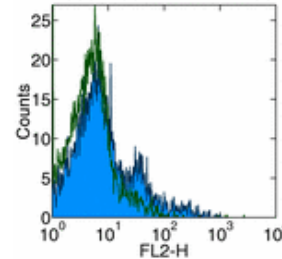


Product Information

Contents: Biotin anti-human Ig light chain λ
Catalog Number: 13-9996
Sizes: 25 μ g, 100 μ g
Formulation: Phosphate buffer pH 7.2,
150 mM NaCl, 0.09% NaN₃
Storage Conditions: Store at 4°C.
DO NOT FREEZE.
Clone: JDC-12
Isotype: Mouse IgG1, κ



Surface staining of normal human peripheral blood cells with anti-human IgL, λ (JDC-12) Purified followed by anti-mouse IgG Biotin and SA-PE. Appropriate isotype controls were used (open histogram). Cells in the lymphocyte population were used for analysis.

Available Formats of This Product				
Cat. No.	Format	Excite (nm)	Emit (nm)	Reported Applications
13-9996	Biotin anti-human IgL, lambda	N/A	N/A	ELISA det FC IH/F
14-9996	Affinity Purified anti-human IgL, lambda	N/A	N/A	ELISA cap FC IH/F

Description

The JDC-12 monoclonal antibody reacts with the λ light chain of human immunoglobulin. It does not react with the κ light chain. Ig light chain is expressed as a membrane-bound form as well as soluble form.

Usage

For research use only, not for diagnostic or therapeutic use. The JDC-12 antibody has been reported for use in flow cytometric analysis, immunohistochemical staining of frozen tissue sections, and ELISA.

Applications Tested

The JDC-12 antibody has been tested by flow cytometric analysis of human peripheral blood leukocytes. This can be used at less than or equal to 1 μ g per 100 μ l blood (or per 1 million cells in 100 μ l total staining volume). It is recommended that the antibody be carefully titrated for optimal performance in the assay of interest.

Related Products

- Cat. 11-4317 Streptavidin-FITC (Fluorescein isothiocyanate)
- Cat. 12-4317 Streptavidin-PE (Phycoerythrin)
- Cat. 17-4317 Streptavidin Allophycocyanin (SA-APC)
- Cat. 13-4714 Biotin Mouse IgG1, K Isotype Control
- Cat. 14-9996 Affinity Purified anti-human IgL, lambda (clone JDC-12)