

## Product Information

Contents: Phycoerythrin (PE) anti-human CD138 (syndecan-1)

Catalog Number: 12-1389

Sizes: 25 tests, 100 tests

Formulation: Phosphate buffer pH 7.2,  
150 mM NaCl, 0.09% NaN<sub>3</sub>, 0.2% BSA

Storage Conditions: Store at 4°C.

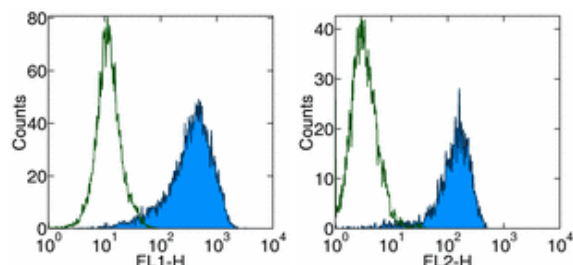
DO NOT FREEZE.

LIGHT-SENSITIVE MATERIAL.

Clone: DL-101

Isotype: Mouse IgG1, κ

HLDA No.: N/A



Surface staining of U266 cells with anti-human CD138 (DL-101) FITC (left), and PE (right). Autofluorescence is indicated by open histogram. Total viable cells were used for analysis.

## Available Formats of This Product

Cat. No.	Format	Excite (nm)	Emit (nm)	Reported Applications
11-1389	FITC anti-human CD138 (syndecan-1)	488	518	FC
12-1389	PE anti-human CD138 (syndecan-1)	488	575	FC
14-1389	Affinity Purified anti-human CD138 (syndecan-1)	N/A	N/A	FC IH/F

## Description

The DL-101 monoclonal antibody reacts with human CD138, also known as syndecan-1. CD138 is a transmembrane protein containing chondroitin sulfate and heparin sulfate moieties responsible for binding to the extracellular matrix components. CD138 is not expressed by mature B cells but is present on pre-B cells and the finally differentiated plasma cells.

## Usage

For research use only, not for diagnostic or therapeutic use. DL-101 has been reported for use in flow cytometric analysis.

## Applications Tested

The DL-101 antibody has been pre-titrated and tested by flow cytometric analysis of human peripheral blood leukocytes. This can be used at 20 µl per 100 µl blood (or per 1 million cells in 100 µl total staining volume).

## Related Products

- Cat. 11-1389 FITC anti-human CD138 (syndecan-1) (clone DL-101)
- Cat. 14-1389 Affinity Purified anti-human CD138 (syndecan-1) (clone DL-101)
- Cat. 12-4714 Phycoerythrin (PE) Mouse IgG1, K Isotype Control

## References

Personal communication, Merton Bernfield, M.D.