

## Product Information

Contents: Phycoerythrin (PE) anti-mouse CD18 (Integrin  $\beta_2$ )

Catalog Number: 12-0181

Sizes: 50 ug, 100 ug, 200 ug

Formulation: Phosphate buffer pH 7.2,  
150 mM NaCl, 0.09% NaN<sub>3</sub>

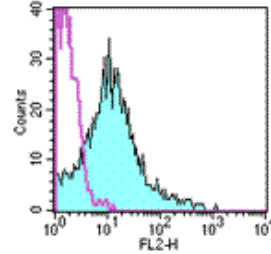
Storage Conditions: Store at 4°C.

DO NOT FREEZE.

LIGHT-SENSITIVE MATERIAL.

Clone: M18/2

Isotype: Rat IgG2a,  $\kappa$



Staining of BALB/c splenocytes with staining buffer (autofluorescence) (open histogram) or 0.5  $\mu$ g of PE anti-mouse CD18 (M18/2) (colored histogram). Total viable cells were used for analysis.

### Available Formats of This Product

Cat. No.	Format	Excite (nm)	Emit (nm)	Reported Applications
11-0181	FITC anti-mouse CD18 (Integrin beta 2)	488	518	FC
12-0181	PE anti-mouse CD18 (Integrin beta 2)	488	575	FC
13-0181	Biotin anti-mouse CD18 (Integrin beta 2)	N/A	N/A	FC
14-0181	Affinity Purified anti-mouse CD18 (Integrin beta 2)	N/A	N/A	FA FC IHC IP WB
16-0181	Functional Grade* Purified anti-mouse CD18 (Integrin beta 2)	N/A	N/A	FA FC

\*Functional Grade™ (FG™): Azide-free, sterile-filtered, and endotoxin < 0.001 ng/ $\mu$ g.  
Purified: Contains azide, not sterile-filtered, and not endotoxin tested.

### Description

The M18/2 monoclonal antibody reacts with mouse CD18, the 90-95 kDa integrin  $\beta_2$  glycoprotein. CD18 is the common  $\beta$  subunit that non-covalently associates with CD11a ( $\alpha_L$ ), CD11b ( $\alpha_M$ ) and CD11c ( $\alpha_X$ ) to form LFA-1, Mac-1 and gp150/95. Heterodimers of CD18 and the  $\alpha$  subunits are expressed broadly by all leukocytes with NK and T cells showing higher density of surface expression. Through the interactions of LFA-1, Mac-1 and gp150/95 with their counter-receptors, CD18 is involved in cellular adhesion and the immune response.

### Usage

For research use only, not for diagnostic or therapeutic use. The M18/2 antibody has been reported for use in flow cytometric analysis.

### Applications Tested

The M18/2 antibody has been tested by flow cytometric analysis of mouse splenocyte and bone marrow cell suspensions. This can be used at less than or equal to 0.5  $\mu$ g per million cells in a 100  $\mu$ l total staining volume. It is recommended that the antibody be carefully titrated for optimal performance in the assay of interest.

### Related Products

- Cat. 11-0181 FITC anti-mouse CD18 (Integrin beta 2) (clone M18/2)
- Cat. 13-0181 Biotin anti-mouse CD18 (Integrin beta 2) (clone M18/2)
- Cat. 14-0181 Affinity Purified anti-mouse CD18 (Integrin beta 2) (clone M18/2)
- Cat. 16-0181 Functional Grade Purified anti-mouse CD18 (Integrin beta 2) (clone M18/2)
- Cat. 12-4321 PE Rat IgG2a Isotype Control

## References

---

Sanchez-Madrid, F., P. Simon, et al. 1983. Mapping of antigenic and functional epitopes on the alpha- and beta-subunits of two related mouse glycoproteins involved in cell interactions, LFA-1 and Mac-1. *J Exp Med* 158(2): 586-602.

Copyright © 2000-2005 eBioscience, Inc.  
Product For Research Use Only: Not for further distribution without written consent.

