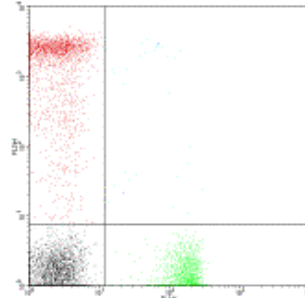


## Product Information

Contents: Phycoerythrin (PE) anti-human CD8a  
Catalog Number: 12-0088  
Sizes: 25 tests, 100 tests  
Formulation: Phosphate buffer pH 7.2,  
150 mM NaCl, 0.09% NaN<sub>3</sub>, 0.2% BSA  
Storage Conditions: Store at 4°C.  
DO NOT FREEZE.  
LIGHT-SENSITIVE MATERIAL.  
Clone: RPA-T8  
Isotype: Mouse IgG1, κ  
HLDA No.: IV T171



2-color staining of human peripheral blood lymphocytes with PE labeled RPA-T8 (CD8) and FITC RPA-T4 (CD4, cat.no. 11-0049)

### Available Formats of This Product

Cat. No.	Format	Excite (nm)	Emit (nm)	Reported Applications
10-0088	APC-Cy7 anti-human CD8 (CD8a; alpha chain)	633	760	FC
11-0088	FITC anti-human CD8 (CD8a; alpha chain)	488	518	FC
12-0088	PE anti-human CD8 (CD8a; alpha chain)	488	575	FC
14-0088	Affinity Purified anti-human CD8 (CD8a; alpha chain)	N/A	N/A	FC IH/F
15-0088	PE-Cy5 anti-human CD8 (CD8a; alpha chain)	488	670	FC
17-0088	APC anti-human CD8 (CD8a; alpha chain)	633	660	FC
25-0088	PE-Cy7 anti-human CD8 (CD8a; alpha chain)	488	760	FC

### Description

The RPA-T8 monoclonal antibody reacts with the human CD8a molecule, an approximately 32-34 kDa cell surface receptor expressed either as a heterodimer with the CD8 β chain (CD8 αβ) or as a homodimer (CD8 αα). A majority of thymocytes and a subpopulation of mature T cells and NK cells express CD8a. CD8 binds to MHC class I and through its association with protein tyrosine kinase p56lck plays a role in T-cell development and activation of mature T cells.

### Usage

For research use only, not for diagnostic or therapeutic use. The RPA-T8 antibody been reported for use in flow cytometric analysis.

### Applications Tested

The RPA-T8 antibody has been pre-titrated and tested by flow cytometric analysis of human peripheral blood leukocytes. This can be used at 20 μl per 100 μl blood (or per 1 million cells in 100 μl total staining volume).

### Related Products

- Cat. 10-0088 APC-Cy7 anti-human CD8 (CD8a; alpha chain) (clone RPA-T8)
- Cat. 11-0088 FITC anti-human CD8 (CD8a; alpha chain) (clone RPA-T8)
- Cat. 14-0088 Affinity Purified anti-human CD8 (CD8a; alpha chain) (clone RPA-T8)
- Cat. 15-0088 PE-Cy5 anti-human CD8 (CD8a; alpha chain) (clone RPA-T8)
- Cat. 17-0088 APC anti-human CD8 (CD8a; alpha chain) (clone RPA-T8)
- Cat. 25-0088 PE-Cy7 anti-human CD8 (CD8a; alpha chain) (clone RPA-T8)
- Cat. 11-0089 FITC anti-human CD8 (CD8a; alpha chain) (clone HIT8a)
- Cat. 12-0089 PE anti-human CD8 (CD8a; alpha chain) (clone HIT8a)

Cat. 13-0089 Biotin anti-human CD8 (CD8a; alpha chain) (clone HIT8a)  
Cat. 14-0089 Affinity Purified anti-human CD8 (CD8a; alpha chain) (clone HIT8a)  
Cat. 16-0089 Functional Grade Purified anti-human CD8 (CD8a; alpha chain) (clone HIT8a)  
Cat. 12-4714 Phycoerythrin (PE) Mouse IgG1, K Isotype Control

---

#### References

---

Knapp, W., B. Dorken, et al. eds. (1989). *Leucocyte Typing IV: White Cell Differentiation Antigens*. Oxford University Press. New York.  
Schlossman, S., L. Bloumsell, et al. eds. (1995). *Leucocyte Typing V: White Cell Differentiation Antigens*. Oxford University Press. New York.  
Kishimoto, T., A.E.G., von dem Borne, et al. eds. (1998). *Leucocyte Typing VI: White Cell Differentiation Antigens*. Garland Publishing, Inc. London.

Copyright © 2000-2005 eBioscience, Inc.  
Product For Research Use Only: Not for further distribution without written consent.

