

Product Information

Contents: Fluorescein isothiocyanate (FITC) anti-human $\gamma\delta$ TCR

Catalog Number: 11-9959

Sizes: 25 tests, 100 tests

Formulation: Phosphate buffer pH 7.2,
150 mM NaCl, 0.09% NaN₃, 0.2% BSA

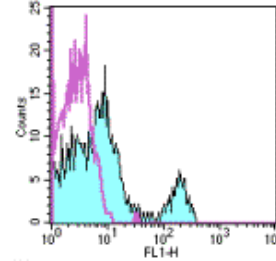
Storage Conditions: Store at 4°C.

DO NOT FREEZE.

LIGHT-SENSITIVE MATERIAL.

Clone: B1.1

Isotype: Mouse IgG1, κ



Staining of normal human peripheral blood cells with FITC mouse IgG1 isotype control (cat. 11-4719) (open histogram) or FITC B1.1 (colored histogram). Cells in the lymphocyte gate were used for analysis.

Available Formats of This Product

| Cat. No. | Format | Excite (nm) | Emit (nm) | Reported Applications |
|----------|---|-------------|-----------|-----------------------|
| 11-9959 | FITC anti-human gamma delta TCR (gdTCR) | 488 | 518 | FC |
| 12-9959 | PE anti-human gamma delta TCR (gdTCR) | 488 | 575 | FC |
| 13-9959 | Biotin anti-human gamma delta TCR (gdTCR) | N/A | N/A | FC |
| 14-9959 | Affinity Purified anti-human gamma delta TCR (gdTCR) | N/A | N/A | FC IHC |
| 16-9959 | Functional Grade* Purified anti-human gamma delta TCR (gdTCR) | N/A | N/A | FC |

*Functional Grade™ (FG™): Azide-free, sterile-filtered, and endotoxin < 0.001 ng/μg.
Purified: Contains azide, not sterile-filtered, and not endotoxin tested.

Description

The B1.1 monoclonal antibody reacts with the human $\gamma\delta$ TCR complex. $\gamma\delta$ TCR is expressed by a small subset of T cells in the thymus, peripheral lymphoid tissues, intestinal epithelium, and epidermis. The exact specificity, ligand and function of $\gamma\delta$ TCR-bearing T cells are not yet fully understood; it is suggested that these cells recognize bacterial ligands and some tumor cells in the context of MHC class I-like gene products and play a role in regulation of the immune response and during bacterial infection. This monoclonal can be used as a phenotypic marker for $\gamma\delta$ TCR-expressing T cells.

Usage

For research use only, not for diagnostic or therapeutic use. The B1.1 antibody has been reported for use in flow cytometric analysis.

Applications Tested

The B1.1 antibody has been pre-titrated and tested by flow cytometric analysis of human peripheral blood leukocytes. This can be used at 20 μ l per 100 μ l blood (or per 1 million cells in 100 μ l total staining volume).

Related Products

- Cat. 11-4714 Fluorescein isothiocyanate (FITC) Mouse IgG1, K Isotype Control
- Cat. 12-9959 PE anti-human gamma delta TCR (gdTCR) (clone B1.1)
- Cat. 13-9959 Biotin anti-human gamma delta TCR (gdTCR) (clone B1.1)
- Cat. 14-9959 Affinity Purified anti-human gamma delta TCR (gdTCR) (clone B1.1)
- Cat. 16-9959 Functional Grade Purified anti-human gamma delta TCR (gdTCR) (clone B1.1)

References

- De Libero, G. (1997). "Sentinel function of broadly reactive human gamma delta T cells." *Immunol Today* 18(1): 22-6.
- Nick, S., P. Pileri, et al. (1995). "T cell receptor gamma delta repertoire is skewed in cerebrospinal fluid of multiple sclerosis patients: molecular and functional analyses of antigen-reactive gamma delta clones." *Eur J Immunol* 25(2): 355-63.
- Merlo, A., L. Filgueira, et al. (1993). "T-cell receptor V-gene usage in neoplasms of the central nervous system. A comparative analysis in cultured tumor infiltrating and peripheral blood T cells." *J Neurosurg* 78(4): 630-7.

Copyright © 2000-2005 eBioscience, Inc.
Product For Research Use Only: Not for further distribution without written consent.

