

Product Information

Contents: Fluorescein isothiocyanate (FITC) anti-mouse GM-CSF

Catalog Number: 11-7331

Sizes: 25 tests, 50 µg, 100 µg

Formulation: Phosphate buffer pH 7.2,
150 mM NaCl, 0.09% NaN₃

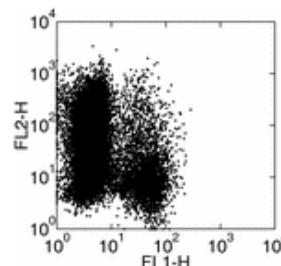
Storage Conditions: Store at 4°C

DO NOT FREEZE.

LIGHT-SENSITIVE MATERIAL

Clone: MP1-22E9

Isotype: Rat IgG2a, κ



Mouse splenocytes were stimulated with ConA for 2 days, followed by IL-2 and IL-4 for 3 days, and restimulated with immobilized anti-CD3 and soluble anti-CD28 in the presence of Brefeldin A for 5 hours. The cells were surface stained with FITC anti-mouse CD4 (GK1.5) and intracellularly stained with PE anti-mouse GM-CSF (MP1-22E9).

Available Formats of This Product

Cat. No.	Format	Excite (nm)	Emit (nm)	Reported Applications
11-7331	FITC anti-mouse GM-CSF (Granulocyte/Macrophage-Colony Stimulating Factor, GMCSF)	488	518	IC
12-7331	PE anti-mouse GM-CSF (Granulocyte/Macrophage-Colony Stimulating Factor, GMCSF)	488	575	IC
14-7331	Affinity Purified anti-mouse GM-CSF (Granulocyte/Macrophage-Colony Stimulating Factor, GMCSF)	N/A	N/A	ELISA cap ELISPOT cap
16-7331	Functional Grade* Purified anti-mouse GM-CSF (Granulocyte/Macrophage-Colony Stimulating Factor, GMCSF)	N/A	N/A	BA

*Functional Grade™ (FG™): Azide-free, sterile-filtered, and endotoxin < 0.001 ng/µg.

Purified: Contains azide, not sterile-filtered, and not endotoxin tested.

Description

The MP1-22E9 antibody reacts with mouse granulocyte/macrophage - colony stimulating factor (GM-CSF), a 14 kDa cytokine secreted by activated T cells and macrophages.

Usage

For research use only, not for diagnostic or therapeutic use. MP1-22E9 has been reported for use in intracellular flow cytometric analysis.

Applications Tested

The FITC conjugated MP1-22E9 is offered in 2 formats:

- µg size: has been tested by intracellular flow cytometric analysis and can be used at less than or equal to 0.5 µg/million cells. It is recommended that the antibody be carefully titrated for optimal performance in the assay of interest.
- test size: has been pre-titrated and tested by intracellular flow cytometric analysis and can be used at 20 µl per million cells in a 100 µl total staining volume. The pre-titrated test size contains 0.2% BSA.

Related Products

Cat. 11-4321 FITC Rat IgG2a Isotype Control

