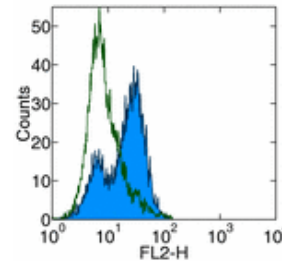


Product Information

Contents: Fluorescein isothiocyanate (FITC) anti-mouse IgE
Catalog Number: 11-5992
Sizes: 50 ug, 100 ug, 500 ug
Formulation: Phosphate buffer pH 7.2,
150 mM NaCl, 0.09% NaN₃
Storage Conditions: Store at 4°C.
DO NOT FREEZE.
LIGHT-SENSITIVE MATERIAL.
Clone: 23G3
Isotype: Rat IgG1, κ



Surface staining of IJEL cells with anti-mouse IgE (23G3) PE. Appropriate isotype controls were used (open histogram). Total viable cells were used for analysis.

Available Formats of This Product				
Cat. No.	Format	Excite (nm)	Emit (nm)	Reported Applications
11-5992	FITC anti-mouse IgE	488	518	FC
12-5992	PE anti-mouse IgE	488	575	FC
13-5992	Biotin anti-mouse IgE	N/A	N/A	ELISA FC
14-5992	Affinity Purified anti-mouse IgE	N/A	N/A	ELISA FC

Description

The 23G3 monoclonal antibody reacts with the ε heavy chain of mouse IgE. It does not react with other classes of mouse immunoglobulin including IgD, IgG, IgA, or IgM.

Usage

For research use only, not for diagnostic or therapeutic use. 23G3 has been reported for use in ELISA and flow cytometric analysis.

Applications Tested

The 23G3 antibody has been tested by ELISA and can be used at 1:5000-1:10000. It is recommended that the antibody be carefully titrated for optimal performance in the assay of interest.

Related Products

Cat. 11-4301 FITC Rat IgG1 Isotype Control
Cat. 24-5093 Polyclonal anti-mouse IgD antiserum (activating) (clone Polyclonal)
Cat. 12-5992 PE anti-mouse IgE (clone 23G3)
Cat. 13-5992 Biotin anti-mouse IgE (clone 23G3)
Cat. 14-5992 Affinity Purified anti-mouse IgE (clone 23G3)

References

Keegan AD, Fratazzi C, Shopes B, Baird B, Conrad DH. 1991. Characterization of new rat anti-mouse IgE monoclonals and their use along with chimeric IgE to further define the site that interacts with Fc epsilon RII and Fc epsilon RI. Mol Immunol. 28(10):1149-54.

