

Product Information

Contents: Fluorescein isothiocyanate (FITC) anti-human CD138 (syndecan-1)

Catalog Number: 11-1389

Sizes: 25 tests, 100 tests

Formulation: Phosphate buffer pH 7.2, 150 mM NaCl, 0.09% NaN<sub>3</sub>, 0.2% BSA

Storage Conditions: Store at 4°C.

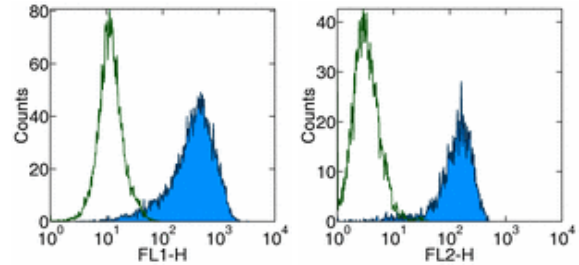
DO NOT FREEZE.

LIGHT-SENSITIVE MATERIAL.

Clone: DL-101

Isotype: Mouse IgG1, κ

HLDA No.: N/A



Surface staining of U266 cells with anti-human CD138 (DL-101) FITC (left), and PE (right). Autofluorescence is indicated by open histogram. Total viable cells were used for analysis.

Available Formats of This Product

Cat. No.	Format	Excite (nm)	Emit (nm)	Reported Applications
11-1389	FITC anti-human CD138 (syndecan-1)	488	518	FC
12-1389	PE anti-human CD138 (syndecan-1)	488	575	FC
14-1389	Affinity Purified anti-human CD138 (syndecan-1)	N/A	N/A	FC IH/F

Description

The DL-101 monoclonal antibody reacts with human CD138, also known as syndecan-1. CD138 is a transmembrane protein containing chondroitin sulfate and heparin sulfate moieties responsible for binding to the extracellular matrix components. CD138 is not expressed by mature B cells but is present on pre-B cells and the finally differentiated plasma cells.

Usage

For research use only, not for diagnostic or therapeutic use. DL-101 has been reported for use in flow cytometric analysis.

Applications Tested

The DL-101 antibody has been pre-titrated and tested by flow cytometric analysis of human peripheral blood leukocytes. This can be used at 20 µl per 100 µl blood (or per 1 million cells in 100 µl total staining volume).

Related Products

- Cat. 12-1389 PE anti-human CD138 (syndecan-1) (clone DL-101)
- Cat. 14-1389 Affinity Purified anti-human CD138 (syndecan-1) (clone DL-101)
- Cat. 11-4714 Fluorescein isothiocyanate (FITC) Mouse IgG1, K Isotype Control

References

Personal communication, Merton Bernfield, M.D.