

## Product Information

Contents: Fluorescein isothiocyanate (FITC) anti-mouse CD103 (Integrin  $\alpha_{IEL}$  chain)

Catalog Number: 11-1031

Sizes: 50  $\mu$ g, 100  $\mu$ g, 500  $\mu$ g

Formulation: Phosphate buffer pH 7.2, 150 mM NaCl, 0.09% NaN<sub>3</sub>

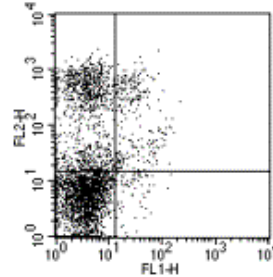
Storage Conditions: Store at 4°C.

DO NOT FREEZE.

LIGHT-SENSITIVE MATERIAL.

Clone: 2E7

Isotype: Armenian Hamster IgG



*Staining of C57Bl/6 splenocytes with PE anti-mouse CD3 (cat. 12-0031) and 0.5  $\mu$ g of FITC 2E7. Total viable cells were used for analysis. Quadrants were set based on the isotype control sample.*

### Available Formats of This Product

Cat. No.	Format	Excite (nm)	Emit (nm)	Reported Applications
11-1031	FITC anti-mouse CD103 (Integrin alpha-IEL chain)	488	518	FC
12-1031	PE anti-mouse CD103 (Integrin alpha-IEL chain)	488	575	FC
13-1031	Biotin anti-mouse CD103 (Integrin alpha-IEL chain)	N/A	N/A	FC
14-1031	Affinity Purified anti-mouse CD103 (Integrin alpha-IEL chain)	N/A	N/A	FA FC IH/F IP
16-1031	Functional Grade* Purified anti-mouse CD103 (Integrin alpha-IEL chain)	N/A	N/A	FA FC

\*Functional Grade™ (FG™): Azide-free, sterile-filtered, and endotoxin < 0.001 ng/ $\mu$ g.  
Purified: Contains azide, not sterile-filtered, and not endotoxin tested.

### Description

The 2E7 monoclonal antibody reacts with mouse CD103, the  $\alpha_E$  integrin. CD103 non-covalently associates with integrin  $\beta_7$  and is expressed on all intraepithelial lymphocytes, a small subset of peripheral lymphocytes, and dendritic epidermal T cells (DEC). Epithelial cell antigen E-cadherin binds to CD103 and mediates homing of lymphocytes to the intestinal epithelium.

### Usage

For research use only, not for diagnostic or therapeutic use. The 2E7 antibody has been reported for use in flow cytometric analysis.

### Applications Tested

The 2E7 antibody has been tested by flow cytometric analysis of mouse splenocyte suspensions. This can be used at less than or equal to 1  $\mu$ g per million cells in a 100  $\mu$ l total staining volume. It is recommended that the antibody be carefully titrated for optimal performance in the assay of interest.

### Related Products

Cat. 12-1031	PE anti-mouse CD103 (Integrin alpha-IEL chain) (clone 2E7)
Cat. 13-1031	Biotin anti-mouse CD103 (Integrin alpha-IEL chain) (clone 2E7)
Cat. 14-1031	Affinity Purified anti-mouse CD103 (Integrin alpha-IEL chain) (clone 2E7)
Cat. 16-1031	Functional Grade Purified anti-mouse CD103 (Integrin alpha-IEL chain) (clone 2E7)
Cat. 11-4444	FITC Armenian Hamster IgG Isotype Control (clone n/a)

## References

---

Lefrancois, L., T. A. Barrett, et al. (1994). "Developmental expression of the alpha IEL beta 7 integrin on T cell receptor gamma delta and T cell receptor alpha beta T cells." Eur J Immunol 24(3): 635-40.

Copyright © 2000-2005 eBioscience, Inc.  
Product For Research Use Only: Not for further distribution without written consent.

