

## Product Information

Contents: Fluorescein isothiocyanate (FITC) anti-human CD62L (L-selectin)

Catalog Number: 11-0629

Sizes: 25 tests, 100 tests

Formulation: Phosphate buffer pH 7.2, 150 mM NaCl, 0.09% NaN<sub>3</sub>, 0.2% BSA

Storage Conditions: Store at 4°C.

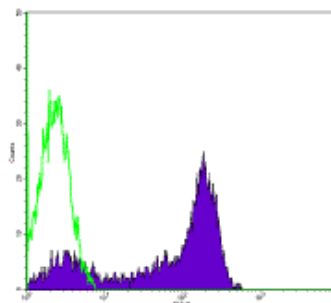
DO NOT FREEZE.

LIGHT-SENSITIVE MATERIAL.

Clone: DREG-56 (DREG56)

Isotype: Mouse IgG1, κ

HLDA No.: V S056



Normal human peripheral blood lymphocytes stained with FITC anti-human CD62L, DREG-56.

### Available Formats of This Product

Cat. No.	Format	Excite (nm)	Emit (nm)	Reported Applications
10-0629	Allophycocyanin-Cy7 (APC-Cy7) anti-human CD62L (L-selectin)	633	760	FC
11-0629	FITC anti-human CD62L (L-selectin)	488	518	FC
12-0629	PE anti-human CD62L (L-selectin)	488	575	FC
14-0629	Affinity Purified anti-human CD62L (L-selectin)	N/A	N/A	FA FC IHC WB
15-0629	PE-Cy5 anti-human CD62L (L-selectin)	488	670	FC
16-0629	Functional Grade* Purified anti-human CD62L (L-selectin)	N/A	N/A	FA FC
17-0629	Allophycocyanin (APC) anti-human CD62L (L-selectin)	633	660	FC
25-0629	Coming Soon! - Phycoerythrin-Cy7 (PE-Cy7) anti-human CD62L (L-selectin)	488	760	FC

\*Functional Grade™ (FG™): Azide-free, sterile-filtered, and endotoxin < 0.001 ng/μg.  
Purified: Contains azide, not sterile-filtered, and not endotoxin tested.

### Description

The DREG-56 monoclonal antibody reacts with human CD62L, a 76 kDa member of the selectin family. CD62L is expressed by neutrophils, monocytes, and subsets of T, B, and NK cells and binds a number of glycosylated, fucosylated, sulfated sialylated glycoproteins including CD34, glycam-1 and MAdCAM-1. These interactions mediate rolling of lymphocytes on activated endothelium at the sites of inflammation and homing of cells to the high endothelial venules (HEV) of peripheral lymphoid tissues.

### Usage

For research use only, not for diagnostic or therapeutic use. The DREG-56 (DREG56) antibody has been reported for use in flow cytometric analysis.

### Applications Tested

The DREG-56 (DREG56) antibody has been pre-titrated and tested by flow cytometric analysis of human peripheral blood leukocytes. This can be used at 20 μl per 100 μl blood (or per 1 million cells in 100 μl total staining volume).

### Related Products

Cat. 10-0629	Allophycocyanin-Cy7 (APC-Cy7) anti-human CD62L (L-selectin) (clone DREG-56 (DREG56))
Cat. 12-0629	PE anti-human CD62L (L-selectin) (clone DREG-56 (DREG56))
Cat. 14-0629	Affinity Purified anti-human CD62L (L-selectin) (clone DREG-56 (DREG56))
Cat. 15-0629	PE-Cy5 anti-human CD62L (L-selectin) (clone DREG-56 (DREG56))

Cat. 16-0629 Functional Grade Purified anti-human CD62L (L-selectin) (clone DREG-56 (DREG56))  
Cat. 17-0629 Allophycocyanin (APC) anti-human CD62L (L-selectin) (clone DREG-56 (DREG56))  
Cat. 11-4714 Fluorescein isothiocyanate (FITC) Mouse IgG1, K Isotype Control

---

#### References

---

Schlossman, S., L. Bloumsell, et al. eds. 1995. Leucocyte Typing V: White Cell Differentiation Antigens. Oxford University Press. New York.

Copyright © 2000-2005 eBioscience, Inc.  
Product For Research Use Only: Not for further distribution without written consent.

