

Product Information

Contents: Fluorescein isothiocyanate (FITC) anti-human CD38

Catalog Number: 11-0389

Sizes: 25 tests, 100 tests

Formulation: Phosphate buffer pH 7.2,
150 mM NaCl, 0.09% NaN₃, 0.2% BSA

Storage Conditions: Store at 4°C.

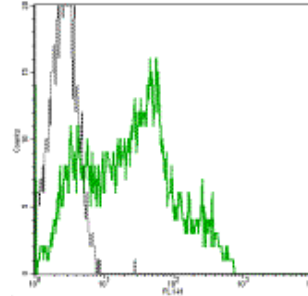
DO NOT FREEZE.

LIGHT-SENSITIVE MATERIAL.

Clone: HIT2

Isotype: Mouse IgG1, κ

HLDA No.: III 155



FITC anti-human CD38 (HIT2) staining on normal human peripheral blood lymphocytes.

Available Formats of This Product

| Cat. No. | Format | Excite (nm) | Emit (nm) | Reported Applications |
|----------|---|-------------|-----------|-----------------------|
| 11-0389 | FITC anti-human CD38 | 488 | 518 | FC |
| 12-0389 | PE anti-human CD38 | 488 | 575 | FC |
| 14-0389 | Affinity Purified anti-human CD38 | N/A | N/A | FC IHC |
| 15-0389 | PE-Cy5 anti-human CD38 | 488 | 670 | FC |
| 17-0389 | Allophycocyanin (APC) anti-human CD38 | 633 | 660 | FC |
| 25-0389 | Coming Soon! - Phycoerythrin-Cy7 (PE-Cy7) anti-human CD38 | 488 | 760 | FC |
| 30-0389 | Allophycocyanin-Cy5.5 (APC-Cy5.5) anti-human CD38 | 633 | 690 | FC |

Description

The HIT2 monoclonal antibody reacts with the human CD38 molecule, an approximately 45 kDa type II transmembrane protein. CD38 is expressed by thymocytes, peripheral B cells including plasma cells, activated T cells, and monocytes. CD38 is a counter-receptor for CD31 and has both cyclase and hydrolase enzymatic activity.

Usage

For research use only, not for diagnostic or therapeutic use. The HIT2 antibody has been reported for use in flow cytometric analysis.

Applications Tested

The HIT2 antibody has been pre-titrated and tested by flow cytometric analysis of human peripheral blood leukocytes. This can be used at 20 µl per 100 µl blood (or per 1 million cells in 100 µl total staining volume).

Related Products

- Cat. 11-0389 FITC anti-human CD38 (clone HIT2)
- Cat. 12-0389 PE anti-human CD38 (clone HIT2)
- Cat. 14-0389 Affinity Purified anti-human CD38 (clone HIT2)
- Cat. 15-0389 PE-Cy5 anti-human CD38 (clone HIT2)

References

McMichael, A.J., P.C.L. Beverly, et al. eds. (1987). *Leucocyte Typing III: White Cell Differentiation Antigens*. Oxford University Press. New York.

Joshua, D., A. Petersen, et al. (1996). "The labelling index of primitive plasma cells determines the clinical behaviour of patients with myelomatosis." Br J Haematol 94(1): 76-81.

Horenstein, A. L., H. Stockinger, et al. (1998). "CD38 binding to human myeloid cells is mediated by mouse and human CD31." Biochem J 330(Pt 3): 1129-35.

Deaglio, S., M. Morra, et al. (1998). "Human CD38 (ADP-ribosyl cyclase) is a counter-receptor of CD31, an Ig superfamily member." J Immunol 160(1): 395-402.

Copyright © 2000-2005 eBioscience, Inc.
Product For Research Use Only: Not for further distribution without written consent.

