

## Product Information

Contents: Fluorescein isothiocyanate (FITC) anti-human CD8a

Catalog Number: 11-0088

Sizes: 25 tests, 100 tests

Formulation: Phosphate buffer pH 7.2,  
150 mM NaCl, 0.09% NaN<sub>3</sub>, 0.2% BSA

Storage Conditions: Store at 4°C.

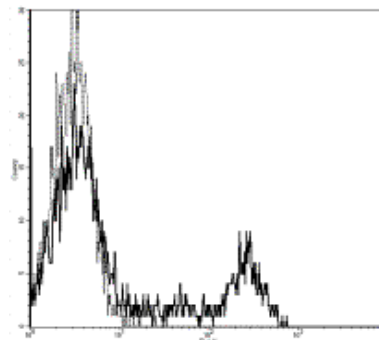
DO NOT FREEZE.

LIGHT-SENSITIVE MATERIAL.

Clone: RPA-T8

Isotype: Mouse IgG1, κ

HLDA No.: IV T171



*Profile of FITC labeled mAb RPA-T8 (CD8) staining on human peripheral blood lymphocytes.*

## Available Formats of This Product

Cat. No.	Format	Excite (nm)	Emit (nm)	Reported Applications
10-0088	APC-Cy7 anti-human CD8 (CD8a; alpha chain)	633	760	FC
11-0088	FITC anti-human CD8 (CD8a; alpha chain)	488	518	FC
12-0088	PE anti-human CD8 (CD8a; alpha chain)	488	575	FC
14-0088	Affinity Purified anti-human CD8 (CD8a; alpha chain)	N/A	N/A	FC IH/F
15-0088	PE-Cy5 anti-human CD8 (CD8a; alpha chain)	488	670	FC
17-0088	APC anti-human CD8 (CD8a; alpha chain)	633	660	FC
25-0088	PE-Cy7 anti-human CD8 (CD8a; alpha chain)	488	760	FC

## Description

The RPA-T8 monoclonal antibody reacts with the human CD8a molecule, an approximately 32-34 kDa cell surface receptor expressed either as a heterodimer with the CD8 β chain (CD8 αβ) or as a homodimer (CD8 αα). A majority of thymocytes and a subpopulation of mature T cells and NK cells express CD8a. CD8 binds to MHC class I and through its association with protein tyrosine kinase p56lck plays a role in T-cell development and activation of mature T cells.

## Usage

For research use only, not for diagnostic or therapeutic use. The RPA-T8 antibody has been reported for use in flow cytometric analysis.

## Applications Tested

The RPA-T8 antibody has been pre-titrated and tested by flow cytometric analysis of human peripheral blood leukocytes. This can be used at 20 μl per 100 μl blood (per million cells).

## Related Products

Cat. 10-0088	APC-Cy7 anti-human CD8 (CD8a; alpha chain) (clone RPA-T8)
Cat. 12-0088	PE anti-human CD8 (CD8a; alpha chain) (clone RPA-T8)
Cat. 14-0088	Affinity Purified anti-human CD8 (CD8a; alpha chain) (clone RPA-T8)
Cat. 15-0088	PE-Cy5 anti-human CD8 (CD8a; alpha chain) (clone RPA-T8)
Cat. 17-0088	APC anti-human CD8 (CD8a; alpha chain) (clone RPA-T8)
Cat. 25-0088	PE-Cy7 anti-human CD8 (CD8a; alpha chain) (clone RPA-T8)

- Cat. 11-0089 FITC anti-human CD8 (CD8a; alpha chain) (clone HIT8a)
- Cat. 12-0089 PE anti-human CD8 (CD8a; alpha chain) (clone HIT8a)
- Cat. 13-0089 Biotin anti-human CD8 (CD8a; alpha chain) (clone HIT8a)
- Cat. 14-0089 Affinity Purified anti-human CD8 (CD8a; alpha chain) (clone HIT8a)
- Cat. 16-0089 Functional Grade Purified anti-human CD8 (CD8a; alpha chain) (clone HIT8a)
- Cat. 11-4714 Fluorescein isothiocyanate (FITC) Mouse IgG1, K Isotype Control

---

## References

---

- Knapp, W., B. Dorken, et al. eds. (1989). *Leucocyte Typing IV: White Cell Differentiation Antigens*. Oxford University Press. New York.
- Schlossman, S., L. Bloumsell, et al. eds. (1995). *Leucocyte Typing V: White Cell Differentiation Antigens*. Oxford University Press. New York.
- Kishimoto, T., A.E.G., von dem Borne, et al. eds. (1998). *Leucocyte Typing VI: White Cell Differentiation Antigens*. Garland Publishing, Inc. London.

Copyright © 2000-2005 eBioscience, Inc.  
Product For Research Use Only: Not for further distribution without written consent.

