

## Product Information

Contents: Fluorescein isothiocyanate (FITC) anti-human CD3

Catalog Number: 11-0039

Sizes: 25 tests, 100 tests

Formulation: Phosphate buffer pH 7.2,  
150 mM NaCl, 0.09% NaN<sub>3</sub>, 0.2% BSA

Storage Conditions: Store at 4°C.

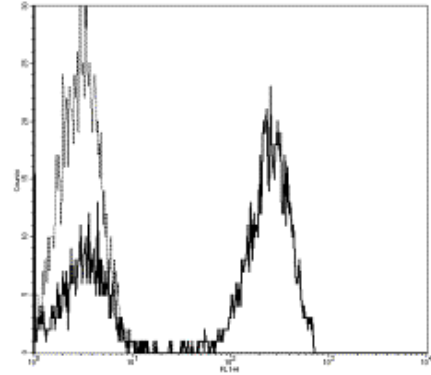
DO NOT FREEZE.

LIGHT-SENSITIVE MATERIAL.

Clone: HIT3a

Isotype: Mouse IgG2a, κ

HLDA No.: V 5T-CD03.05



*Profile of FITC conjugated mAb HIT3a (CD3) staining human peripheral blood lymphocytes.*

### Available Formats of This Product

Cat. No.	Format	Excite (nm)	Emit (nm)	Reported Applications
11-0039	FITC anti-human CD3	488	518	FC
12-0039	PE anti-human CD3	488	575	FC
14-0039	Affinity Purified anti-human CD3	N/A	N/A	FC
16-0039	Functional Grade* Purified anti-human CD3	N/A	N/A	FA FC

\*Functional Grade™ (FG™): Azide-free, sterile-filtered, and endotoxin < 0.001 ng/μg.  
Purified: Contains azide, not sterile-filtered, and not endotoxin tested.

### Description

The HIT3a monoclonal antibody reacts with human CD3ε, a 20 kDa subunit of the TCR complex. Along with the other CD3 subunits γ and δ, the ε chain is required for proper assembly, trafficking and surface expression of the TCR complex. CD3 is expressed by thymocytes in a developmentally regulated manner and by all mature T cells. Crosslinking of TCR with HIT3a initiates an intracellular biochemical pathway resulting in cellular activation and proliferation.

### Usage

For research use only, not for diagnostic or therapeutic use. The HIT3a antibody has been reported for use in flow cytometric analysis.

### Applications Tested

The HIT3a antibody has been pre-titrated and tested by flow cytometric analysis of human peripheral blood leukocytes. This can be used at 20 μl per 100 μl blood (or per 1 million cells in 100 μl total staining volume).

### Related Products

- Cat. 11-0037 FITC anti-human CD3 (clone OKT3)
- Cat. 12-0037 PE anti-human CD3 (clone OKT3)
- Cat. 14-0037 Affinity Purified anti-human CD3 (clone OKT3)
- Cat. 16-0037 Functional Grade Purified anti-human CD3 (clone OKT3)
- Cat. 10-0038 APC-Cy7 anti-human CD3 (clone UCHT1)
- Cat. 11-0038 FITC anti-human CD3 (clone UCHT1)
- Cat. 12-0038 PE anti-human CD3 (clone UCHT1)

Cat. 13-0038 Biotin anti-human CD3 (clone UCHT1)  
Cat. 14-0038 Affinity Purified anti-human CD3 (clone UCHT1)  
Cat. 15-0038 PE-Cy5 anti-human CD3 (clone UCHT1)  
Cat. 16-0038 Functional Grade Purified anti-human CD3 (clone UCHT1)  
Cat. 17-0038 APC anti-human CD3 (clone UCHT1)  
Cat. 25-0038 PE-Cy7 anti-human CD3 (clone UCHT1)  
Cat. 12-0039 PE anti-human CD3 (clone HIT3a)  
Cat. 14-0039 Affinity Purified anti-human CD3 (clone HIT3a)  
Cat. 16-0039 Functional Grade Purified anti-human CD3 (clone HIT3a)  
Cat. 11-4724 Fluorescein isothiocyanate (FITC) Mouse IgG2a, K Isotype Control

---

## References

---

McMichael, A.J., P.C.L. Beverly, et al. eds. (1987). *Leucocyte Typing III: White Cell Differentiation Antigens*. Oxford University Press. New York.  
Knapp, W., B. Dorken, et al. eds. (1989). *Leucocyte Typing IV: White Cell Differentiation Antigens*. Oxford University Press. New York.  
Schlossman, S., L. Bloumsell, et al. eds (1995). *Leucocyte Typing V: White Cell Differentiation Antigens*. Oxford University Press. New York.

Copyright © 2000-2005 eBioscience, Inc.  
Product For Research Use Only: Not for further distribution without written consent.

