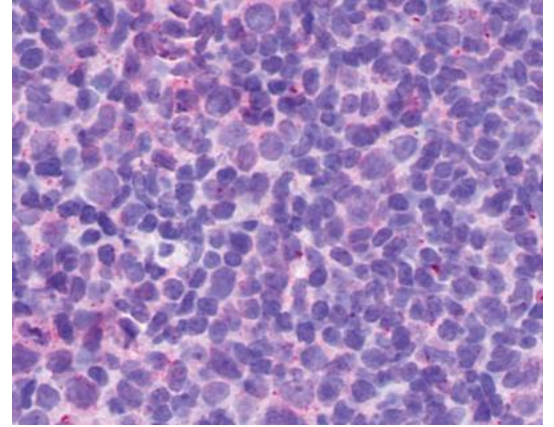


SP4263P**Polyclonal Antibody to P2Y13 / P2YR13 (2nd Cytopl. Dom.) - Aff - Purified**

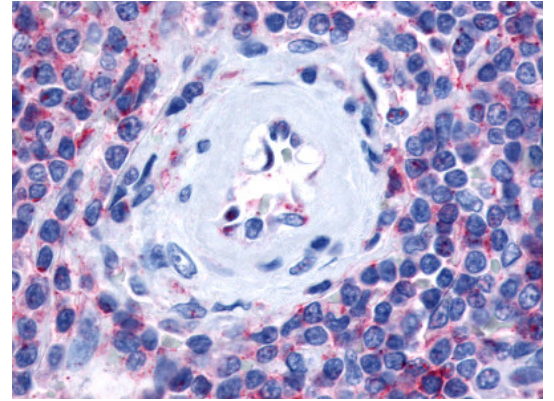
| | |
|----------------------------|---|
| Alternate names: | FKSG77, G-protein coupled receptor 86, G-protein coupled receptor 94, GPR86, GPR94, P2Y purinoceptor 13, Purinergic receptor |
| Quantity: | 50 µg |
| Concentration: | 1.0 mg/ml |
| Background: | P2Y13 is a Purinergic Receptor. ESTs have been isolated from liver/spleen, melanocyte/uterus/fetal heart, brain/lung/testis, placenta, and uterus libraries. |
| Uniprot ID: | Q9BPV8 |
| NCBI: | NP_795713.2 |
| GeneID: | 53829 |
| Host: | Rabbit |
| Immunogen: | Synthetic 18 amino acid peptide from 2nd cytoplasmic domain of human P2RY13 / P2Y13 Genename: P2RY13 Remarks: BLAST analysis of the peptide immunogen showed no homology with other human proteins. Percent identity with other species by BLAST analysis: Human (100%); Gorilla, Gibbon, Monkey (94%); Marmoset (83%) |
| Format: | State: Liquid Ig fraction Purification: Peptide immunogen affinity column Buffer System: PBS containing 0.09% sodium azide |
| Applications: | Immunohistochemistry on Paraffin Sections: 19 - 38 µg/ml. Other applications not tested. Optimal dilutions are dependent on conditions and should be determined by the user. |
| Specificity: | Detects 2nd cytoplasmic domain of P2RY13 / P2Y13. |
| Species Reactivity: | Tested: Human, Gorilla, Gibbon, Monkey, Marmoset |
| Storage: | Store the antibody undiluted at 2-8°C for one month or (in aliquots) at -20°C to -70°C for longer. Avoid repeated freezing and thawing. Shelf life: one year from despatch. |

Pictures:

Anti-P2Y13 / P2RY13 antibody IHC of human Lymph Node, Non-Hodgkins Lymphoma. Immunohistochemistry of formalin-fixed, paraffin-embedded tissue after heat-induced antigen retrieval.



Anti-P2RY13 / P2Y13 antibody IHC of human spleen. Immunohistochemistry of formalin-fixed, paraffin-embedded tissue after heat-induced antigen retrieval.



Anti-P2Y13 / P2RY13 antibody IHC of human Stomach, Adenocarcinoma. Immunohistochemistry of formalin-fixed, paraffin-embedded tissue after heat-induced antigen retrieval.

