

SP4133P**Polyclonal Antibody to Estrogen-related receptor gamma (N-term) - Aff - Purified**

| | |
|-------------------------|--|
| Alternate names: | ERR gamma-2, ERR3, ERRG2, ESRRG, Estrogen receptor-related protein 3, KIAA0832, NR3B3, Nuclear receptor subfamily 3 group B member 3 |
| Quantity: | 50 µg |
| Concentration: | 1.0 mg/ml |
| Background: | <p>Estrogen receptor-related receptor (ERR gamma), a NR3 Steroid Receptor, has been suggested to affect differentiation of the brain, heart, and kidney. ERR gamma binds as a monomer to an extended half-site of the ERRE type (TCAAGGTCA). ERR gamma has been shown to interact with PGC-1 alpha and has been implicated in the regulation of mitochondrial energy metabolism. In humans, ERR gamma pre-mRNA undergoes extensive alternative splicing at the 5' end, yielding at least six mRNA splice variants and two protein isoforms that differ by 23 amino acids in the N terminus. ERR gamma has been shown to be overexpressed in breast tumors, and its expression is correlated with levels of ErbB4, a likely indicator of preferred clinical course. As a result, ERR gamma has been suggested to be a potential biomarker for favorable clinical course and, possibly, hormonal sensitivity, and as a candidate target for therapeutic development.</p> <p>ERR gamma expression at the mRNA and protein levels is isoform- and tissue-specific in humans. ERR gamma expression has been documented in human heart, brain, placenta, skeletal muscle, kidney, pancreas, spleen, prostate, testis, and small intestine. ESTs have been isolated from human tissue libraries, including cancerous fetus, uterus, lung, breast, head/neck, colon, skin, eye, adrenal, normal placenta, kidney, brain, pineal, ear, and heart.</p> |
| Uniprot ID: | P62508 |
| NCBI: | NP_001127757.1 |
| GeneID: | 2104 |
| Host: | Rabbit |
| Immunogen: | <p>Synthetic 16 amino acid peptide from near N-terminus of human ESRRG / ERR3 Genename: ESRRG Remarks: BLAST analysis of the peptide immunogen showed no homology with other human proteins.</p> <p>Percent identity with other species by BLAST analysis: Human, Gorilla, Orangutan, Gibbon, Monkey, Marmoset, Mouse, Rat, Bovine, Dog, Bat, Hamster, Elephant, Panda, Horse, Rabbit, Opossum, Turkey, Chicken, Platypus, Lizard, Xenopus, Zebrafish (100%); Medaka, Pufferfish, Stickleback (94%).</p> |
| Format: | <p>State: Liquid purified Ig fraction Purification: Immunoaffinity Chromatography Buffer System: PBS containing 0.09% Sodium Azide as preservative</p> |
| Applications: | Immunohistochemistry on Paraffin Sections: 34 - 68 µg/ml. |

Other applications not tested. Optimal dilutions are dependent on conditions and should be determined by the user.

Specificity:

Reacts with Estrogen-Related Receptor Gamma (Family: NHR, subfamily: NR3 Steroid receptor).

Species Reactivity:

Tested: Human, Gorilla, Orangutan, Gibbon, Monkey, Marmoset, Mouse, Rat, Bovine, Dog, Bat, Hamster, Elephant, Panda, Horse, Rabbit, Opossum, Turkey, Chicken, Platypus, Lizard, Xenopus, Zebrafish, Medaka, Pufferfish, Stickleback

Storage:

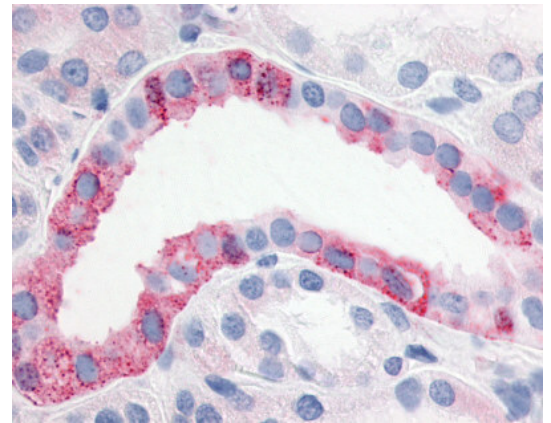
Store the antibody undiluted at 2-8°C for one month or (in aliquots) at -20°C to -70°C for longer.

Avoid repeated freezing and thawing.

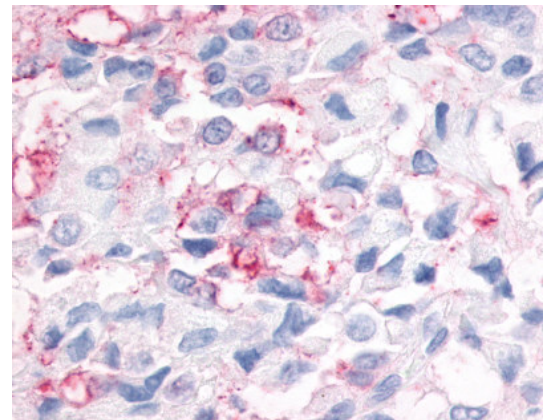
Shelf life: one year from despatch.

Pictures:

Anti-ESRRG / ERR Gamma antibody IHC of human kidney. Immunohistochemistry of formalin-fixed, paraffin-embedded tissue after heat-induced antigen retrieval.



Anti-ESRRG / ERR3 antibody IHC of human breast cancer. Immunohistochemistry of formalin-fixed, paraffin-embedded tissue after heat-induced antigen retrieval.



Anti-ESRRG / ERR Gamma antibody IHC of human kidney, diabetes.
Immunohistochemistry of formalin-fixed, paraffin-embedded tissue after heat-induced antigen retrieval.

