

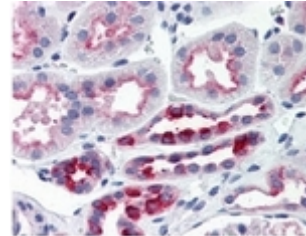
SP4088P**Polyclonal Antibody to CD197 / CCR7 (C-term) - Aff - Purified**

Alternate names:	BLR2, C-C CKR-7, C-C chemokine receptor type 7, CC-CKR-7, CCR-7, CMKBR7, EBI1, EBV-induced G-protein coupled receptor 1, EVI1, MIP-3 beta receptor
Quantity:	50 µg
Concentration:	1 mg/ml
Background:	<p>CCR7, a Chemokine Receptor, is involved in lymphocyte recirculation through secondary lymphoid organs and moving lymphocytes and dendritic cells into distinct tissue compartments. CCR7 is called the Epstein-Barr-induced receptor because it mediates Epstein-Barr viral effects on B lymphocytes. CCR7 expression is up-regulated in mature dendritic cells, B cells infected with EBV, and in CD4+ cells infected with human herpes virus 6 and 7. Immature dendritic cells have been shown to express chemokine receptor 5 (CCR5) and migrate in response to macrophage inflammatory protein-1alpha (MIP-1alpha), whereas mature dendritic cells switch to CCR7 expression and respond exclusively to MIP-3beta and 6Ckine. Maturing dendritic cells upregulate CCR7, which drives their migration to the T-cell areas of the draining lymph nodes where antigen is presented to naive T cells.</p> <p>CCR7 has been reported to be expressed in blood, bone marrow, lymph node, and intestine. This receptor is particularly expressed in lymphoid tissues and in activated B and T lymphocytes. ESTs have been isolated from blood, embryo, lymph node, and thymus libraries.</p>
Uniprot ID:	P32248
NCBI:	NP_001829.1
GeneID:	1236
Host:	Rabbit
Immunogen:	<p>Synthetic 17 amino acid peptide from C-terminus of human CCR7</p> <p>Genename: CCR7</p> <p>Remarks: Percent identity with other species by BLAST analysis: Human, Gorilla, Gibbon, Monkey, Marmoset, Bat, Bovine, Horse (100%); Mouse, Rat, Hamster, Elephant, Panda, Dog, Rabbit, Pig (94%); Turkey, Chicken, Zebrafish (88%); Opossum, Xenopus, Pufferfish (82%).</p> <p>BLAST analysis of the peptide immunogen showed no homology with other human proteins, except CXCR5 (65%).</p>
Format:	<p>State: Liquid purified Ig fraction</p> <p>Purification: Peptide Immunogen Affinity Chromatography</p> <p>Buffer System: PBS containing 0.09% Sodium Azide as preservative</p>
Applications:	<p>Immunocytochemistry: 14 µg/ml.</p> <p>Immunohistochemistry on Paraffin Sections: 14 µg/ml.</p> <p>Other applications not tested. Optimal dilutions are dependent on conditions and should be determined by the user.</p>
Specificity:	Reacts with C-terminus of CCR7 (family: GPCR, subfamily: Chemokine).

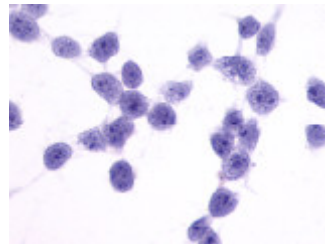
Species Reactivity: **Tested:** Human, Gorilla, Gibbon, Monkey, Marmoset, Bat, Bovine, Horse, Mouse, Rat, Hamster, Elephant, Panda, Dog, Rabbit, Pig, Turkey, Chicken, Zebrafish, Opossum, Xenopus, Pufferfish

Storage: Store the antibody undiluted at 2-8°C for one month or (in aliquots) at -20°C to -70°C for longer.
Avoid repeated freezing and thawing.
Shelf life: one year from despatch.

Pictures: Kidney (Formalin-fixed paraffin section, human)



Cells expressing vector only - immunostained with target antibody



Cells expressing target protein - immunostained with target antibody

